



INTERNATIONAL GEMOLOGICAL INSTITUTE

ELECTRONIC COPY

LG633464837



May 9, 2024

IGI Report Number LG633464837
CUT CORNERED RECTANGULAR
MODIFIED BRILLIANT
LABORATORY GROWN DIAMOND
6.70 X 4.97 X 3.41 MM
Carat Weight 0.97 CARAT
Color Grade F
Clarity Grade VS 2
Polish EXCELLENT
Symmetry EXCELLENT
Fluorescence NONE
Inscription(s) LG633464837
Comments: This Laboratory Grown
Diamond was created by
Chemical Vapor Deposition (CVD)
growth process and may include
post-growth treatment. Type IIa

LABORATORY GROWN DIAMOND REPORT

May 9, 2024
IGI Report Number LG633464837
Description LABORATORY GROWN DIAMOND
Shape and Cutting Style CUT CORNERED RECTANGULAR MODIFIED
BRILLIANT
Measurements 6.70 X 4.97 X 3.41 MM

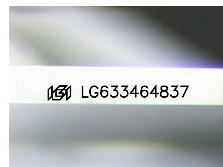
GRADING RESULTS

Carat Weight 0.97 CARAT
Color Grade F
Clarity Grade VS 2

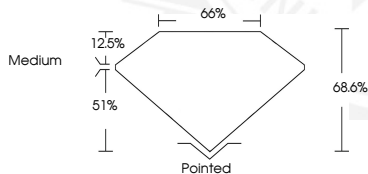
ADDITIONAL GRADING INFORMATION

Polish EXCELLENT
Symmetry EXCELLENT
Fluorescence NONE
Inscription(s) LG633464837

Comments: This Laboratory Grown Diamond was created by
Chemical Vapor Deposition (CVD) growth process and may include
post-growth treatment.
Type IIa



Sample Image Used



May 9, 2024

IGI Report Number LG633464837
CUT CORNERED RECTANGULAR
MODIFIED BRILLIANT
LABORATORY GROWN DIAMOND
6.70 X 4.97 X 3.41 MM
Carat Weight 0.97 CARAT
Color Grade F
Clarity Grade VS 2
Polish EXCELLENT
Symmetry EXCELLENT
Fluorescence NONE
Inscription(s) LG633464837
Comments: This Laboratory Grown
Diamond was created by
Chemical Vapor Deposition (CVD)
growth process and may include
post-growth treatment. Type IIa



THIS DOCUMENT WAS PRODUCED WITH THE FOLLOWING SECURITY MEASURES: SPECIAL DOCUMENT PAPER, INK SCREENS, WATERMARK, BACKGROUND DESIGNS, HOLOGRAM AND OTHER SECURITY FEATURES NOT LISTED AND DO EXCEED DOCUMENT SECURITY INDUSTRY GUIDELINES.

For terms & conditions and to verify this report, please visit www.igi.org