



**INTERNATIONAL
GEMOLOGICAL
INSTITUTE**

ELECTRONIC COPY

LG633464854



May 9, 2024

IGI Report Number **LG633464854**

**ROUND BRILLIANT
LABORATORY GROWN DIAMOND**

6.43 - 6.52 X 3.85 MM

Carat Weight **0.98 CARAT**

Color Grade **E**

Clarity Grade **SI 1**

Cut Grade **IDEAL**

Polish **EXCELLENT**

Symmetry **EXCELLENT**

Fluorescence **NONE**

Inscription(s) **IGI LG633464854**

Comments: This Laboratory Grown Diamond was created by Chemical Vapor Deposition (CVD) growth process and may include post-growth treatment. Type IIa

LABORATORY GROWN DIAMOND REPORT

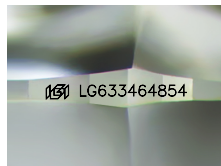
May 9, 2024

IGI Report Number **LG633464854**

Description **LABORATORY GROWN DIAMOND**

Shape and Cutting Style **ROUND BRILLIANT**

Measurements **6.43 - 6.52 X 3.85 MM**



Sample Image Used

GRADING RESULTS

Carat Weight **0.98 CARAT**

Color Grade **E**

Clarity Grade **SI 1**

Cut Grade **IDEAL**

ADDITIONAL GRADING INFORMATION

Polish **EXCELLENT**

Symmetry **EXCELLENT**

Fluorescence **NONE**

Inscription(s) **IGI LG633464854**

Comments: This Laboratory Grown Diamond was created by Chemical Vapor Deposition (CVD) growth process and may include post-growth treatment. Type IIa



May 9, 2024

IGI Report Number **LG633464854**

**ROUND BRILLIANT
LABORATORY GROWN DIAMOND**

6.43 - 6.52 X 3.85 MM

Carat Weight **0.98 CARAT**

Color Grade **E**

Clarity Grade **SI 1**

Cut Grade **IDEAL**

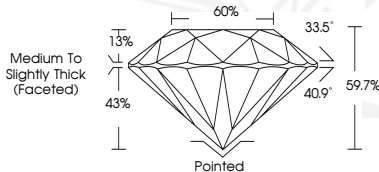
Polish **EXCELLENT**

Symmetry **EXCELLENT**

Fluorescence **NONE**

Inscription(s) **IGI LG633464854**

Comments: This Laboratory Grown Diamond was created by Chemical Vapor Deposition (CVD) growth process and may include post-growth treatment. Type IIa



THIS DOCUMENT WAS PRODUCED WITH THE FOLLOWING SECURITY MEASURES: SPECIAL DOCUMENT PAPER, INK SCREENS, WATERMARK, BACKGROUND DESIGN, HOLOGRAM AND OTHER SECURITY FEATURES NOT LISTED AND DO EXCEED DOCUMENT SECURITY INDUSTRY GUIDELINES.

For terms & conditions and to verify this report, please visit www.igi.org