



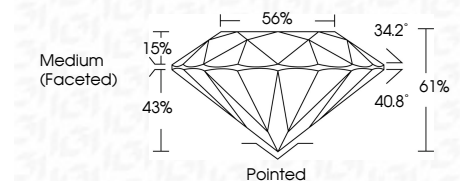
ELECTRONIC COPY

LG633464906 Report verification at igi.org



May 9, 2024 IGI Report Number LG633464906 Description LABORATORY GROWN DIAMOND Shape and Cutting Style ROUND BRILLIANT Measurements 9.36 - 9.42 X 5.73 MM

GRADING RESULTS Carat Weight 3.07 CARATS Color Grade G Clarity Grade VS 2 Cut Grade IDEAL



ADDITIONAL GRADING INFORMATION Polish EXCELLENT Symmetry EXCELLENT Fluorescence NONE Inscription(s) IGI LG633464906 Comments: This Laboratory Grown Diamond was created by Chemical Vapor Deposition (CVD) growth process and may include post-growth treatment. Type IIa



May 9, 2024 IGI Report No LG633464906 ROUND BRILLIANT 9.36 - 9.42 X 5.73 MM 3.07 CARATS G VS 2 IDEAL 61% 56% Medium (Faceted) Pointed EXCELLENT EXCELLENT NONE NONE IGI LG633464906

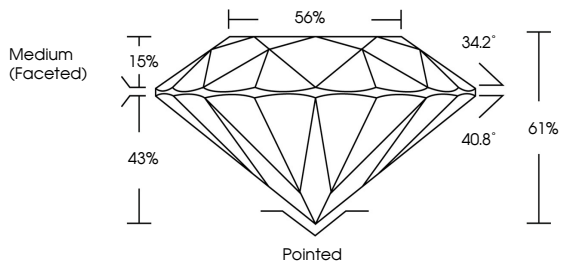
May 9, 2024 IGI Report Number LG633464906 Description LABORATORY GROWN DIAMOND Shape and Cutting Style ROUND BRILLIANT Measurements 9.36 - 9.42 X 5.73 MM

GRADING RESULTS Carat Weight 3.07 CARATS Color Grade G Clarity Grade VS 2 Cut Grade IDEAL

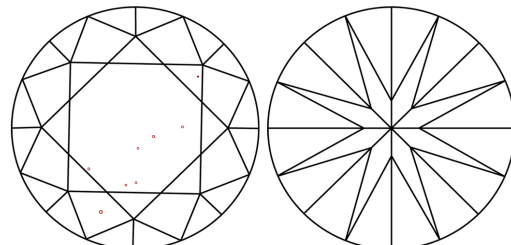
ADDITIONAL GRADING INFORMATION Polish EXCELLENT Symmetry EXCELLENT Fluorescence NONE Inscription(s) IGI LG633464906

Comments: This Laboratory Grown Diamond was created by Chemical Vapor Deposition (CVD) growth process and may include post-growth treatment. Type IIa

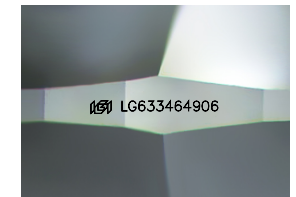
PROPORTIONS



CLARITY CHARACTERISTICS



KEY TO SYMBOLS Red symbols indicate internal characteristics. Green symbols indicate external characteristics.



Sample Image Used

COLOR D E F G H I J Faint Very Light Light

CLARITY IF VS 1-2 VS 1-2 SI 1-2 I 1-3 Internally Flawless Very Very Slightly Included Very Slightly Included Slightly Included Included



Comments: This Laboratory Grown Diamond was created by Chemical Vapor Deposition (CVD) growth process and may include post-growth treatment. Type IIa