



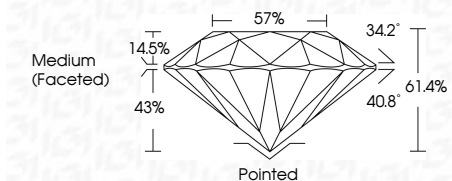
ELECTRONIC COPY

LG633464909 Report verification at igi.org



May 9, 2024 IGI Report Number LG633464909 Description LABORATORY GROWN DIAMOND Shape and Cutting Style ROUND BRILLIANT Measurements 10.25 - 10.33 X 6.31 MM

GRADING RESULTS Carat Weight 4.11 CARATS Color Grade F Clarity Grade VS 2 Cut Grade IDEAL

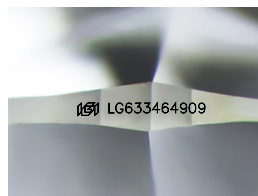


ADDITIONAL GRADING INFORMATION Polish EXCELLENT Symmetry EXCELLENT Fluorescence NONE Inscription(s) IGI LG633464909 Comments: This Laboratory Grown Diamond was created by Chemical Vapor Deposition (CVD) growth process and may include post-growth treatment. Type IIa



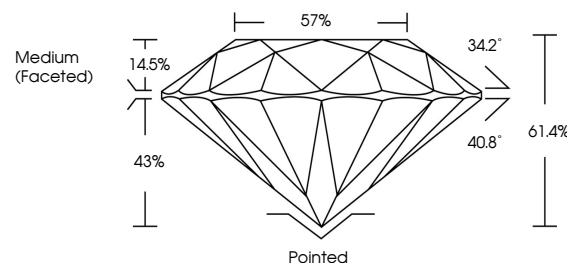
May 9, 2024 IGI Report No LG633464909 ROUND BRILLIANT 10.25 - 10.33 X 6.31 MM 4.11 CARATS F VS 2 IDEAL 61.4% 57% Medium (Faceted) IGI LG633464909

Comments: This Laboratory Grown Diamond was created by Chemical Vapor Deposition (CVD) growth process and may include post-growth treatment. Type IIa

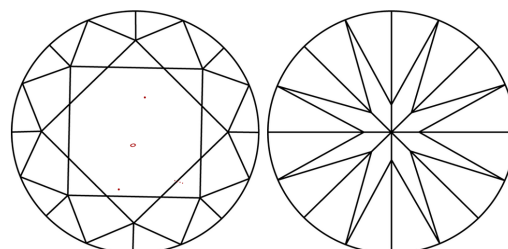


Sample Image Used

PROPORTIONS



CLARITY CHARACTERISTICS



KEY TO SYMBOLS

Red symbols indicate internal characteristics. Green symbols indicate external characteristics.

COLOR

D E F G H I J Faint Very Light Light

CLARITY

IF VS 1-2 VS 1-2 SI 1-2 I 1-3 Internally Flawless Very Very Slightly Included Very Slightly Included Slightly Included Included



May 9, 2024 IGI Report Number LG633464909 Description LABORATORY GROWN DIAMOND Shape and Cutting Style ROUND BRILLIANT Measurements 10.25 - 10.33 X 6.31 MM

GRADING RESULTS Carat Weight 4.11 CARATS Color Grade F Clarity Grade VS 2 Cut Grade IDEAL

ADDITIONAL GRADING INFORMATION Polish EXCELLENT Symmetry EXCELLENT Fluorescence NONE Inscription(s) IGI LG633464909

Comments: This Laboratory Grown Diamond was created by Chemical Vapor Deposition (CVD) growth process and may include post-growth treatment. Type IIa