



ELECTRONIC COPY

LG633466497
Report verification at igi.org



May 1, 2024

IGI Report Number **LG633466497**

Description **LABORATORY GROWN DIAMOND**

Shape and Cutting Style **CUSHION BRILLIANT**

Measurements **8.07 X 6.39 X 4.29 MM**

GRADING RESULTS

Carat Weight **1.61 CARAT**

Color Grade **F**

Clarity Grade **VS 1**

May 1, 2024

IGI Report Number **LG633466497**

Description **LABORATORY GROWN DIAMOND**

Shape and Cutting Style **CUSHION BRILLIANT**

Measurements **8.07 X 6.39 X 4.29 MM**

GRADING RESULTS

Carat Weight **1.61 CARAT**

Color Grade **F**

Clarity Grade **VS 1**

ADDITIONAL GRADING INFORMATION

Polish **EXCELLENT**

Symmetry **EXCELLENT**

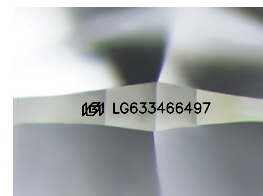
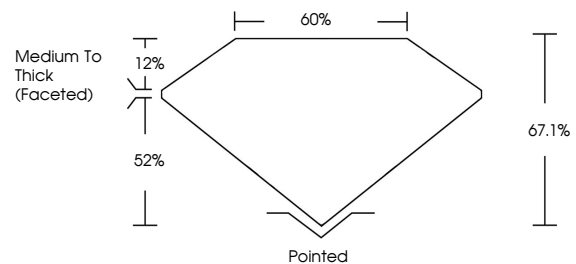
Fluorescence **NONE**

Inscription(s) **IGI LG633466497**

Comments: As Grown - No indication of post-growth treatment.

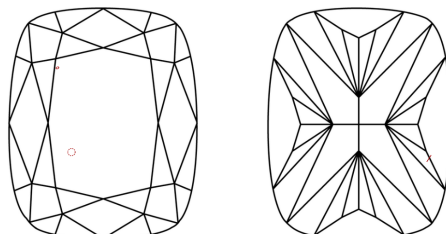
This Laboratory Grown Diamond was created by High Pressure High Temperature (HPHT) growth process. Type II

PROPORTIONS



Sample Image Used

CLARITY CHARACTERISTICS



KEY TO SYMBOLS

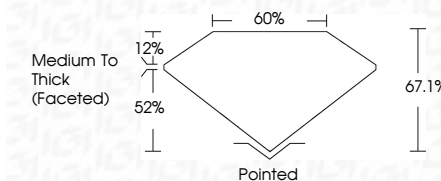
Red symbols indicate internal characteristics.
Green symbols indicate external characteristics.

COLOR

D E F G H I J Faint Very Light Light

CLARITY

IF	VS ¹⁻²	VS ¹⁻²	SI ¹⁻²	I ¹⁻³
Internally Flawless	Very Very Slightly Included	Very Slightly Included	Slightly Included	Included



ADDITIONAL GRADING INFORMATION

Polish **EXCELLENT**

Symmetry **EXCELLENT**

Fluorescence **NONE**

Inscription(s) **IGI LG633466497**

Comments: As Grown - No indication of post-growth treatment.

This Laboratory Grown Diamond was created by High Pressure High Temperature (HPHT) growth process. Type II



IGI

May 1, 2024
IGI Report No LG633466497
CUSHION BRILLIANT
8.07 X 6.39 X 4.29 MM
Carat Weight 1.61 CARAT
Color Grade F
Clarity Grade VS 1
Depth 67.1%
Table 12%
Girdle Medium To Thick (Faceted)
Culet Pointed
Polish EXCELLENT
Symmetry EXCELLENT
Fluorescence NONE
Inscription(s) IGI LG633466497

Comments: As Grown - No indication of post-growth treatment.
This Laboratory Grown Diamond was created by High Pressure High Temperature (HPHT) growth process. Type II