



ELECTRONIC COPY

LG633474571
Report verification at igi.org



May 8, 2024

IGI Report Number **LG633474571**

Description **LABORATORY GROWN DIAMOND**

Shape and Cutting Style **ROUND BRILLIANT**

Measurements **9.07 - 9.14 X 5.65 MM**

GRADING RESULTS

Carat Weight **2.88 CARATS**

Color Grade **H**

Clarity Grade **VS 2**

Cut Grade **IDEAL**

May 8, 2024
IGI Report Number **LG633474571**
Description **LABORATORY GROWN DIAMOND**
Shape and Cutting Style **ROUND BRILLIANT**
Measurements **9.07 - 9.14 X 5.65 MM**

GRADING RESULTS

Carat Weight **2.88 CARATS**

Color Grade **H**

Clarity Grade **VS 2**

Cut Grade **IDEAL**

ADDITIONAL GRADING INFORMATION

Polish **EXCELLENT**

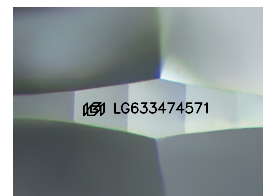
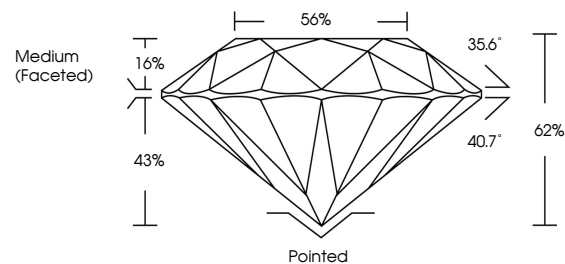
Symmetry **EXCELLENT**

Fluorescence **NONE**

Inscription(s) **LG633474571**

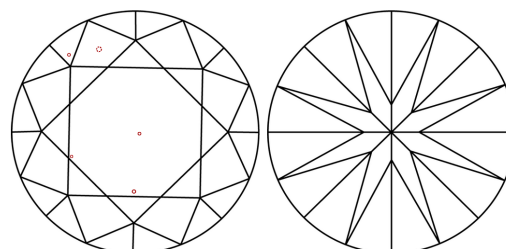
Comments: This Laboratory Grown Diamond was created by Chemical Vapor Deposition (CVD) growth process and may include post-growth treatment. Type IIa

PROPORTIONS



Sample Image Used

CLARITY CHARACTERISTICS



KEY TO SYMBOLS

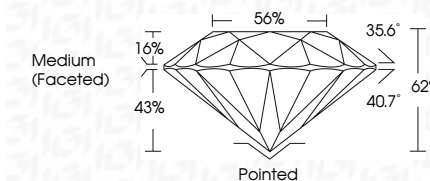
Red symbols indicate internal characteristics.
Green symbols indicate external characteristics.

COLOR

D E F G H I J Faint Very Light Light

CLARITY

IF	VS ¹⁻²	VS ¹⁻²	SI ¹⁻²	I ¹⁻³
Internally Flawless	Very Very Slightly Included	Very Slightly Included	Slightly Included	Included



ADDITIONAL GRADING INFORMATION

Polish **EXCELLENT**

Symmetry **EXCELLENT**

Fluorescence **NONE**

Inscription(s) **LG633474571**

Comments: This Laboratory Grown Diamond was created by Chemical Vapor Deposition (CVD) growth process and may include post-growth treatment. Type IIa



IGI



May 8, 2024	IGI Report No LG633474571	2.88 CARATS	H	VS 2	IDEAL	62%	56%	Medium (Faceted)	Pointed	EXCELLENT	EXCELLENT	NONE	LG633474571
ROUND BRILLIANT	9.07 - 9.14 X 5.65 MM	Carat Weight	Color Grade	Clarity Grade	Cut Grade	Depth	Girdle		Culet	Polish	Symmetry	Fluorescence	Inscription(s)

Comments: This Laboratory Grown Diamond was created by Chemical Vapor Deposition (CVD) growth process and may include post-growth treatment. Type IIa