



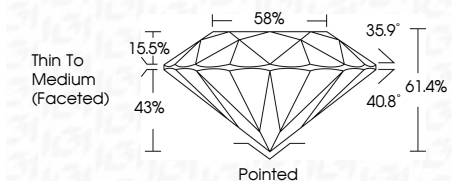
ELECTRONIC COPY

LG633474732
Report verification at igi.org



May 8, 2024
IGI Report Number LG633474732
Description LABORATORY GROWN DIAMOND
Shape and Cutting Style ROUND BRILLIANT
Measurements 9.12 - 9.20 X 5.62 MM

GRADING RESULTS
Carat Weight 2.88 CARATS
Color Grade E
Clarity Grade VS 2
Cut Grade IDEAL



ADDITIONAL GRADING INFORMATION
Polish EXCELLENT
Symmetry EXCELLENT
Fluorescence NONE
Inscription(s) IGI LG633474732
Comments: This Laboratory Grown Diamond was created by Chemical Vapor Deposition (CVD) growth process and may include post-growth treatment. Type IIa



May 8, 2024
IGI Report No LG633474732
ROUND BRILLIANT
9.12 - 9.20 X 5.62 MM
2.88 CARATS E
VS 2 IDEAL
61.4% 58%
Thin To Medium (Faceted)
Pointed EXCELLENT EXCELLENT NONE
Color Grade E
Clarity Grade VS 2
Cut Grade IDEAL
Depth 61.4%
Table 58%
Girdle
Culet
Polish EXCELLENT
Symmetry EXCELLENT
Fluorescence NONE
Inscriptions(s) IGI LG633474732
Comments: This Laboratory Grown Diamond was created by Chemical Vapor Deposition (CVD) growth process and may include post-growth treatment. Type IIa

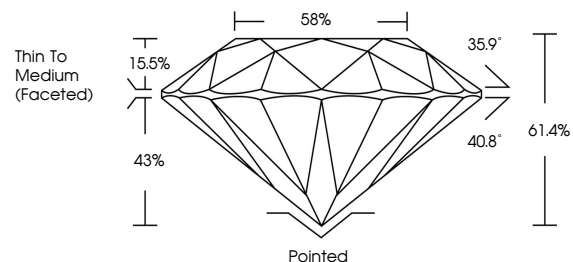
May 8, 2024
IGI Report Number LG633474732
Description LABORATORY GROWN DIAMOND
Shape and Cutting Style ROUND BRILLIANT
Measurements 9.12 - 9.20 X 5.62 MM

GRADING RESULTS
Carat Weight 2.88 CARATS
Color Grade E
Clarity Grade VS 2
Cut Grade IDEAL

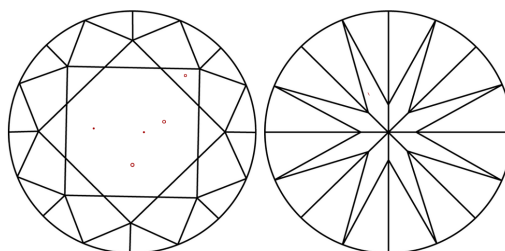
ADDITIONAL GRADING INFORMATION
Polish EXCELLENT
Symmetry EXCELLENT
Fluorescence NONE
Inscription(s) IGI LG633474732

Comments: This Laboratory Grown Diamond was created by Chemical Vapor Deposition (CVD) growth process and may include post-growth treatment. Type IIa

PROPORTIONS

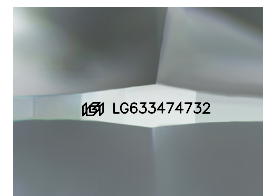


CLARITY CHARACTERISTICS



KEY TO SYMBOLS

Red symbols indicate internal characteristics.
Green symbols indicate external characteristics.



Sample Image Used

COLOR

D E F G H I J Faint Very Light Light

CLARITY

IF VS 1-2 VS 1-2 SI 1-2 I 1-3
Internally Flawless Very Very Slightly Included Very Slightly Included Slightly Included Included

