



ELECTRONIC COPY

LG633477046 Report verification at igi.org



May 4, 2024 IGI Report Number LG633477046 Description LABORATORY GROWN DIAMOND Shape and Cutting Style SQUARE CUSHION BRILLIANT Measurements 6.85 X 6.74 X 4.43 MM

GRADING RESULTS

Carat Weight 1.58 CARAT Color Grade F Clarity Grade VS 1

ADDITIONAL GRADING INFORMATION

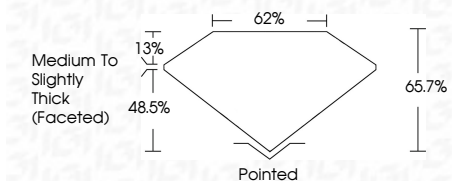
Polish EXCELLENT Symmetry EXCELLENT Fluorescence NONE Inscription(s) IGI LG633477046

ADDITIONAL GRADING INFORMATION

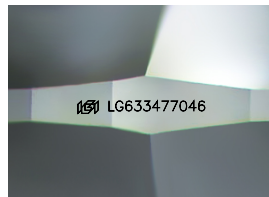
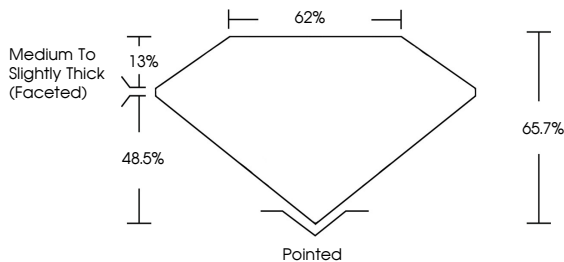
Polish EXCELLENT Symmetry EXCELLENT Fluorescence NONE Inscription(s) IGI LG633477046 Comments: This Laboratory Grown Diamond was created by Chemical Vapor Deposition (CVD) growth process and may include post-growth treatment. Type IIa



May 4, 2024 IGI Report No LG633477046 SQUARE CUSHION BRILLIANT 6.85 X 6.74 X 4.43 MM 1.58 CARAT F VS 1 65.7% 62% Medium to Slightly Thick (Faceted) Pointed EXCELLENT EXCELLENT NONE NONE IGI LG633477046 Comments: This Laboratory Grown Diamond was created by Chemical Vapor Deposition (CVD) growth process and may include post-growth treatment. Type IIa

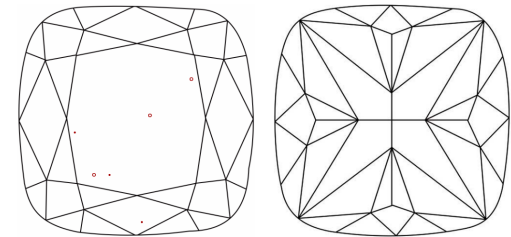


PROPORTIONS



Sample Image Used

CLARITY CHARACTERISTICS



KEY TO SYMBOLS Red symbols indicate internal characteristics. Green symbols indicate external characteristics.

COLOR

Color scale from D to J, with Faint, Very Light, and Light labels.

CLARITY

Clarity scale from IF to I 1-3, with Internally Flawless, Very Very Slightly Included, Very Slightly Included, Slightly Included, and Included labels.



May 4, 2024 IGI Report Number LG633477046 Description LABORATORY GROWN DIAMOND Shape and Cutting Style SQUARE CUSHION BRILLIANT Measurements 6.85 X 6.74 X 4.43 MM

GRADING RESULTS

Carat Weight 1.58 CARAT Color Grade F Clarity Grade VS 1

ADDITIONAL GRADING INFORMATION

Polish EXCELLENT Symmetry EXCELLENT Fluorescence NONE Inscription(s) IGI LG633477046

Comments: This Laboratory Grown Diamond was created by Chemical Vapor Deposition (CVD) growth process and may include post-growth treatment. Type IIa