



ELECTRONIC COPY

LG633478216

Report verification at igi.org

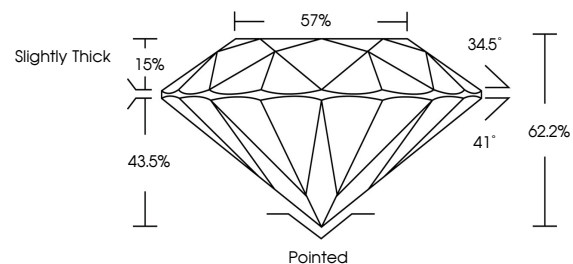
LABORATORY GROWN DIAMOND REPORT

May 23, 2024
 IGI Report Number **LG633478216**
 Description **LABORATORY GROWN DIAMOND**
 Shape and Cutting Style **ROUND BRILLIANT**
 Measurements **7.76 - 7.77 X 4.83 MM**
GRADING RESULTS
 Carat Weight **1.79 CARAT**
 Color Grade **H**
 Clarity Grade **VVS 1**
 Cut Grade **IDEAL**

ADDITIONAL GRADING INFORMATION

Polish **EXCELLENT**
 Symmetry **EXCELLENT**
 Fluorescence **NONE**
 Inscription(s) **LG633478216**

PROPORTIONS



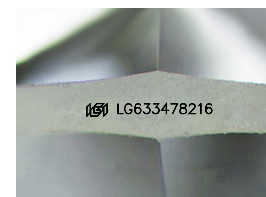
GRADING SCALES

CLARITY

IF	VVS ¹⁻²	VS ¹⁻²	SI ¹⁻²	I ¹⁻³
Internally Flawless	Very Very Slightly Included	Very Slightly Included	Slightly Included	Included

COLOR

D	E	F	G	H	I	J	Faint	Very Light	Light
---	---	---	---	---	---	---	-------	------------	-------

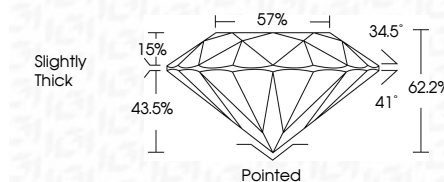


Sample Image Used

May 23, 2024
 IGI Report Number **LG633478216**
 Description **LABORATORY GROWN DIAMOND**
 Shape and Cutting Style **ROUND BRILLIANT**
 Measurements **7.76 - 7.77 X 4.83 MM**
GRADING RESULTS
 Carat Weight **1.79 CARAT**
 Color Grade **H**
 Clarity Grade **VVS 1**
 Cut Grade **IDEAL**

ADDITIONAL GRADING INFORMATION

Polish **EXCELLENT**
 Symmetry **EXCELLENT**
 Fluorescence **NONE**
 Inscription(s) **LG633478216**



IGI

May 23, 2024
 IGI Report No **LG633478216**
ROUND BRILLIANT
 7.76 - 7.77 X 4.83 MM
 Carat Weight **1.79 CARAT**
 Color Grade **H**
 Clarity Grade **VVS 1**
 Cut Grade **IDEAL**
 Depth **62.2%**
 Table **15%**
 Girdle **57%**
 Pavilion Angle **41°**
 Crown Angle **34.5°**
 Polish **EXCELLENT**
 Symmetry **EXCELLENT**
 Fluorescence **NONE**
 Inscription(s) **LG633478216**