



**INTERNATIONAL  
GEMOLOGICAL  
INSTITUTE**

**ELECTRONIC COPY**

**LABORATORY GROWN  
DIAMOND REPORT**

**LG633479035**

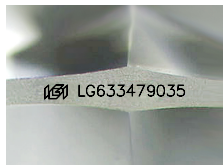
**IGI LABORATORY GROWN  
DIAMOND ID REPORT**

August 14, 2024  
IGI Report Number **LG633479035**  
**ROUND BRILLIANT**  
**6.39 - 6.41 X 3.98 MM**  
Carat Weight 1.01 CARAT  
Color Grade I  
Clarity Grade VS 1  
Cut Grade IDEAL  
Polish EXCELLENT  
Symmetry EXCELLENT  
Fluorescence NONE  
Inscription(s) LG633479035

**LABORATORY GROWN DIAMOND REPORT**

**IGI LABORATORY GROWN DIAMOND IDENTIFICATION REPORT**

August 14, 2024  
IGI Report Number LG633479035  
Description LABORATORY GROWN DIAMOND  
Shape and Cutting Style ROUND BRILLIANT  
Measurements 6.39 - 6.41 X 3.98 MM



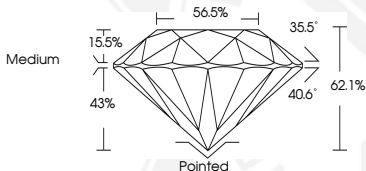
Sample Image Used

**GRADING RESULTS**

Carat Weight 1.01 CARAT  
Color Grade I  
Clarity Grade VS 1  
Cut Grade IDEAL

**ADDITIONAL GRADING INFORMATION**

Polish EXCELLENT  
Symmetry EXCELLENT  
Fluorescence NONE  
Inscription(s) LG633479035



**IGI LABORATORY GROWN  
DIAMOND ID REPORT**

August 14, 2024  
IGI Report Number **LG633479035**  
**ROUND BRILLIANT**  
**6.39 - 6.41 X 3.98 MM**  
Carat Weight 1.01 CARAT  
Color Grade I  
Clarity Grade VS 1  
Cut Grade IDEAL  
Polish EXCELLENT  
Symmetry EXCELLENT  
Fluorescence NONE  
Inscription(s) LG633479035

THIS DOCUMENT WAS PRODUCED WITH THE FOLLOWING SECURITY MEASURES: SPECIAL DOCUMENT PAPER, INK SCREENS, WATERMARK, BACKGROUND DESIGN, HOLOGRAM AND OTHER SECURITY FEATURES NOT LISTED AND DO EXCEED DOCUMENT SECURITY INDUSTRY GUIDELINES.

For terms & conditions and to verify this report, please visit [www.igi.org](http://www.igi.org)