



**INTERNATIONAL  
GEMOLOGICAL  
INSTITUTE**

**ELECTRONIC COPY**

**LABORATORY GROWN  
DIAMOND REPORT**

**LG633479117**

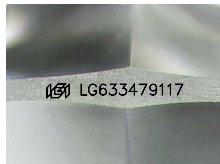
**IGI LABORATORY GROWN  
DIAMOND ID REPORT**

August 14, 2024  
IGI Report Number **LG633479117**  
**ROUND BRILLIANT**  
**6.32 - 6.33 X 3.96 MM**  
Carat Weight 0.96 CARAT  
Color Grade H  
Clarity Grade VS 1  
Cut Grade IDEAL  
Polish EXCELLENT  
Symmetry EXCELLENT  
Fluorescence NONE  
Inscription(s) LG633479117

**LABORATORY GROWN DIAMOND REPORT**

**IGI LABORATORY GROWN DIAMOND IDENTIFICATION REPORT**

August 14, 2024  
IGI Report Number LG633479117  
Description LABORATORY GROWN DIAMOND  
Shape and Cutting Style ROUND BRILLIANT  
Measurements 6.32 - 6.33 X 3.96 MM



Sample Image Used

**GRADING RESULTS**

Carat Weight 0.96 CARAT  
Color Grade H  
Clarity Grade VS 1  
Cut Grade IDEAL

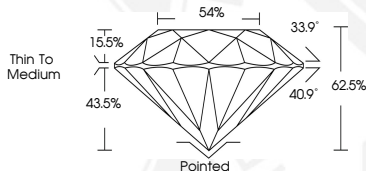
**ADDITIONAL GRADING INFORMATION**

Polish EXCELLENT  
Symmetry EXCELLENT  
Fluorescence NONE  
Inscription(s) LG633479117



**IGI LABORATORY GROWN  
DIAMOND ID REPORT**

August 14, 2024  
IGI Report Number **LG633479117**  
**ROUND BRILLIANT**  
**6.32 - 6.33 X 3.96 MM**  
Carat Weight 0.96 CARAT  
Color Grade H  
Clarity Grade VS 1  
Cut Grade IDEAL  
Polish EXCELLENT  
Symmetry EXCELLENT  
Fluorescence NONE  
Inscription(s) LG633479117



THIS DOCUMENT WAS PRODUCED WITH THE FOLLOWING SECURITY MEASURES: SPECIAL DOCUMENT PAPER, INK SCREENS, WATERMARK, BACKGROUND DESIGN, HOLOGRAM AND OTHER SECURITY FEATURES NOT LISTED AND DO EXCEED DOCUMENT SECURITY INDUSTRY GUIDELINES.

For terms & conditions and to verify this report, please visit [www.igi.org](http://www.igi.org)