



**INTERNATIONAL  
GEMOLOGICAL  
INSTITUTE**

**ELECTRONIC COPY**

**LABORATORY GROWN  
DIAMOND REPORT**

**LG633480011**

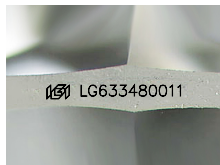
**IGI LABORATORY GROWN  
DIAMOND ID REPORT**

August 21, 2024  
IGI Report Number **LG633480011**  
**ROUND BRILLIANT**  
**7.44 - 7.45 X 4.59 MM**  
Carat Weight 1.56 CARAT  
Color Grade I  
Clarity Grade VVS 1  
Cut Grade EXCELLENT  
Polish EXCELLENT  
Symmetry EXCELLENT  
Fluorescence NONE  
Inscription(s) LG633480011

**LABORATORY GROWN DIAMOND REPORT**

**IGI LABORATORY GROWN DIAMOND IDENTIFICATION REPORT**

August 21, 2024  
IGI Report Number LG633480011  
Description LABORATORY GROWN DIAMOND  
Shape and Cutting Style ROUND BRILLIANT  
Measurements 7.44 - 7.45 X 4.59 MM



Sample Image Used

**GRADING RESULTS**

Carat Weight 1.56 CARAT  
Color Grade I  
Clarity Grade VVS 1  
Cut Grade EXCELLENT

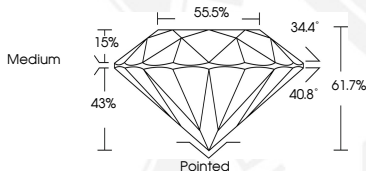
**ADDITIONAL GRADING INFORMATION**

Polish EXCELLENT  
Symmetry EXCELLENT  
Fluorescence NONE  
Inscription(s) LG633480011



**IGI LABORATORY GROWN  
DIAMOND ID REPORT**

August 21, 2024  
IGI Report Number **LG633480011**  
**ROUND BRILLIANT**  
**7.44 - 7.45 X 4.59 MM**  
Carat Weight 1.56 CARAT  
Color Grade I  
Clarity Grade VVS 1  
Cut Grade EXCELLENT  
Polish EXCELLENT  
Symmetry EXCELLENT  
Fluorescence NONE  
Inscription(s) LG633480011



THIS DOCUMENT WAS PRODUCED WITH THE FOLLOWING SECURITY MEASURES: SPECIAL DOCUMENT PAPER, INK SCREENS, WATERMARK, BACKGROUND DESIGN, HOLOGRAM AND OTHER SECURITY FEATURES NOT LISTED AND DO EXCEED DOCUMENT SECURITY INDUSTRY GUIDELINES.

For terms & conditions and to verify this report, please visit [www.igi.org](http://www.igi.org)