



**INTERNATIONAL  
GEMOLOGICAL  
INSTITUTE**

**ELECTRONIC COPY**

**LABORATORY GROWN  
DIAMOND REPORT**

**LG633480161**

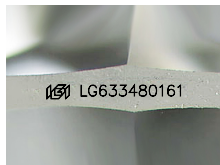
**IGI LABORATORY GROWN  
DIAMOND ID REPORT**

August 23, 2024  
IGI Report Number **LG633480161**  
**ROUND BRILLIANT**  
**7.44 - 7.45 X 4.57 MM**  
Carat Weight 1.57 CARAT  
Color Grade G  
Clarity Grade VVS 1  
Cut Grade EXCELLENT  
Polish EXCELLENT  
Symmetry EXCELLENT  
Fluorescence NONE  
Inscription(s) LG633480161

**LABORATORY GROWN DIAMOND REPORT**

**IGI LABORATORY GROWN DIAMOND IDENTIFICATION REPORT**

August 23, 2024  
IGI Report Number LG633480161  
Description LABORATORY GROWN DIAMOND  
Shape and Cutting Style ROUND BRILLIANT  
Measurements 7.44 - 7.45 X 4.57 MM



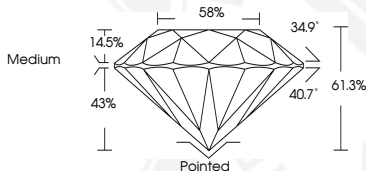
Sample Image Used

**GRADING RESULTS**

Carat Weight 1.57 CARAT  
Color Grade G  
Clarity Grade VVS 1  
Cut Grade EXCELLENT

**ADDITIONAL GRADING INFORMATION**

Polish EXCELLENT  
Symmetry EXCELLENT  
Fluorescence NONE  
Inscription(s) LG633480161



**IGI LABORATORY GROWN  
DIAMOND ID REPORT**

August 23, 2024  
IGI Report Number **LG633480161**  
**ROUND BRILLIANT**  
**7.44 - 7.45 X 4.57 MM**  
Carat Weight 1.57 CARAT  
Color Grade G  
Clarity Grade VVS 1  
Cut Grade EXCELLENT  
Polish EXCELLENT  
Symmetry EXCELLENT  
Fluorescence NONE  
Inscription(s) LG633480161



THIS DOCUMENT WAS PRODUCED WITH THE FOLLOWING SECURITY MEASURES: SPECIAL DOCUMENT PAPER, INK SCREENS, WATERMARK, BACKGROUND DESIGN, HOLOGRAM AND OTHER SECURITY FEATURES NOT LISTED AND DO EXCEED DOCUMENT SECURITY INDUSTRY GUIDELINES.

For terms & conditions and to verify this report, please visit [www.igi.org](http://www.igi.org)