



**INTERNATIONAL
GEMOLOGICAL
INSTITUTE**

ELECTRONIC COPY

**LABORATORY GROWN
DIAMOND REPORT**

LG633480355

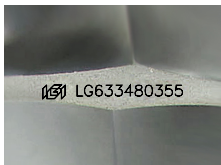
**IGI LABORATORY GROWN
DIAMOND ID REPORT**

August 21, 2024
IGI Report Number **LG633480355**
ROUND BRILLIANT
8.11 - 8.13 X 5.09 MM
Carat Weight 2.04 CARATS
Color Grade I
Clarity Grade VS 2
Cut Grade EXCELLENT
Polish EXCELLENT
Symmetry EXCELLENT
Fluorescence NONE
Inscription(s) LG633480355

LABORATORY GROWN DIAMOND REPORT

IGI LABORATORY GROWN DIAMOND IDENTIFICATION REPORT

August 21, 2024
IGI Report Number LG633480355
Description LABORATORY GROWN DIAMOND
Shape and Cutting Style ROUND BRILLIANT
Measurements 8.11 - 8.13 X 5.09 MM



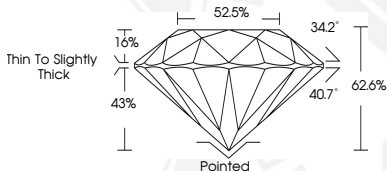
Sample Image Used

GRADING RESULTS

Carat Weight 2.04 CARATS
Color Grade I
Clarity Grade VS 2
Cut Grade EXCELLENT

ADDITIONAL GRADING INFORMATION

Polish EXCELLENT
Symmetry EXCELLENT
Fluorescence NONE
Inscription(s) LG633480355



**IGI LABORATORY GROWN
DIAMOND ID REPORT**

August 21, 2024
IGI Report Number **LG633480355**
ROUND BRILLIANT
8.11 - 8.13 X 5.09 MM
Carat Weight 2.04 CARATS
Color Grade I
Clarity Grade VS 2
Cut Grade EXCELLENT
Polish EXCELLENT
Symmetry EXCELLENT
Fluorescence NONE
Inscription(s) LG633480355



THIS DOCUMENT WAS PRODUCED WITH THE FOLLOWING SECURITY MEASURES: SPECIAL DOCUMENT PAPER, INK SCREENS, WATERMARK, BACKGROUND DESIGN, HOLOGRAM AND OTHER SECURITY FEATURES NOT LISTED AND DO EXCEED DOCUMENT SECURITY INDUSTRY GUIDELINES.

For terms & conditions and to verify this report, please visit www.igi.org