



**INTERNATIONAL  
GEMOLOGICAL  
INSTITUTE**

**ELECTRONIC COPY**

**LABORATORY GROWN  
DIAMOND REPORT**

**LG633480526**

**IGI LABORATORY GROWN  
DIAMOND ID REPORT**

August 21, 2024  
IGI Report Number **LG633480526**  
**ROUND BRILLIANT**  
**8.10 - 8.13 X 5.07 MM**  
Carat Weight 2.03 CARATS  
Color Grade E  
Clarity Grade VVS 1  
Cut Grade IDEAL  
Polish EXCELLENT  
Symmetry EXCELLENT  
Fluorescence NONE  
Inscription(s) LG633480526

**LABORATORY GROWN DIAMOND REPORT**

**IGI LABORATORY GROWN DIAMOND IDENTIFICATION REPORT**

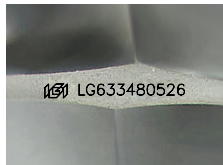
August 21, 2024  
IGI Report Number LG633480526  
Description LABORATORY GROWN DIAMOND  
Shape and Cutting Style ROUND BRILLIANT  
Measurements 8.10 - 8.13 X 5.07 MM

**GRADING RESULTS**

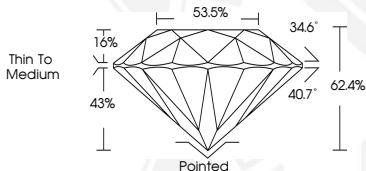
Carat Weight 2.03 CARATS  
Color Grade E  
Clarity Grade VVS 1  
Cut Grade IDEAL

**ADDITIONAL GRADING INFORMATION**

Polish EXCELLENT  
Symmetry EXCELLENT  
Fluorescence NONE  
Inscription(s) LG633480526



Sample Image Used



**IGI LABORATORY GROWN  
DIAMOND ID REPORT**

August 21, 2024  
IGI Report Number **LG633480526**  
**ROUND BRILLIANT**  
**8.10 - 8.13 X 5.07 MM**  
Carat Weight 2.03 CARATS  
Color Grade E  
Clarity Grade VVS 1  
Cut Grade IDEAL  
Polish EXCELLENT  
Symmetry EXCELLENT  
Fluorescence NONE  
Inscription(s) LG633480526



THIS DOCUMENT WAS PRODUCED WITH THE FOLLOWING SECURITY MEASURES: SPECIAL DOCUMENT PAPER, INK SCREENS, WATERMARK, BACKGROUND DESIGN, HOLOGRAM AND OTHER SECURITY FEATURES NOT LISTED AND DO EXCEED DOCUMENT SECURITY INDUSTRY GUIDELINES.

For terms & conditions and to verify this report, please visit [www.igi.org](http://www.igi.org)