



**INTERNATIONAL  
GEMOLOGICAL  
INSTITUTE**

**ELECTRONIC COPY**

**LABORATORY GROWN  
DIAMOND REPORT**

**LG633480599**

**IGI LABORATORY GROWN  
DIAMOND ID REPORT**

August 21, 2024  
IGI Report Number **LG633480599**  
**ROUND BRILLIANT**  
**8.24 - 8.26 X 5.12 MM**  
Carat Weight 2.11 CARATS  
Color Grade I  
Clarity Grade VVS 2  
Cut Grade EXCELLENT  
Polish EXCELLENT  
Symmetry EXCELLENT  
Fluorescence NONE  
Inscription(s) LG633480599

**LABORATORY GROWN DIAMOND REPORT**

**IGI LABORATORY GROWN DIAMOND IDENTIFICATION REPORT**

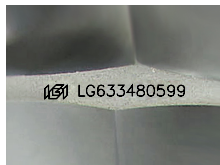
August 21, 2024  
IGI Report Number LG633480599  
Description LABORATORY GROWN DIAMOND  
Shape and Cutting Style ROUND BRILLIANT  
Measurements 8.24 - 8.26 X 5.12 MM

**GRADING RESULTS**

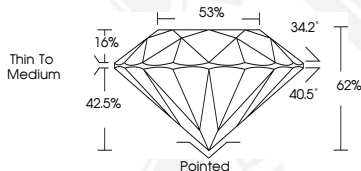
Carat Weight 2.11 CARATS  
Color Grade I  
Clarity Grade VVS 2  
Cut Grade EXCELLENT

**ADDITIONAL GRADING INFORMATION**

Polish EXCELLENT  
Symmetry EXCELLENT  
Fluorescence NONE  
Inscription(s) LG633480599



Sample Image Used



**IGI LABORATORY GROWN  
DIAMOND ID REPORT**

August 21, 2024  
IGI Report Number **LG633480599**  
**ROUND BRILLIANT**  
**8.24 - 8.26 X 5.12 MM**  
Carat Weight 2.11 CARATS  
Color Grade I  
Clarity Grade VVS 2  
Cut Grade EXCELLENT  
Polish EXCELLENT  
Symmetry EXCELLENT  
Fluorescence NONE  
Inscription(s) LG633480599



THIS DOCUMENT WAS PRODUCED WITH THE FOLLOWING SECURITY MEASURES: SPECIAL DOCUMENT PAPER, INK SCREENS, WATERMARK, BACKGROUND DESIGN, HOLOGRAM AND OTHER SECURITY FEATURES NOT LISTED AND DO EXCEED DOCUMENT SECURITY INDUSTRY GUIDELINES.

For terms & conditions and to verify this report, please visit [www.igi.org](http://www.igi.org)