



**INTERNATIONAL  
GEMOLOGICAL  
INSTITUTE**

**ELECTRONIC COPY**

**LABORATORY GROWN  
DIAMOND REPORT**

**LG633480651**

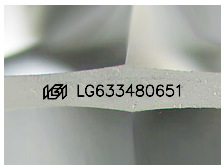
**IGI LABORATORY GROWN  
DIAMOND ID REPORT**

August 21, 2024  
IGI Report Number **LG633480651**  
**ROUND BRILLIANT**  
**7.96 - 7.98 X 4.97 MM**  
Carat Weight 1.95 CARAT  
Color Grade I  
Clarity Grade VVS 2  
Cut Grade EXCELLENT  
Polish EXCELLENT  
Symmetry EXCELLENT  
Fluorescence NONE  
Inscription(s) LG633480651

**LABORATORY GROWN DIAMOND REPORT**

**IGI LABORATORY GROWN DIAMOND IDENTIFICATION REPORT**

August 21, 2024  
IGI Report Number LG633480651  
Description LABORATORY GROWN DIAMOND  
Shape and Cutting Style ROUND BRILLIANT  
Measurements 7.96 - 7.98 X 4.97 MM



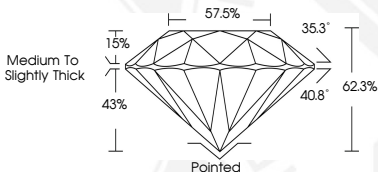
Sample Image Used

**GRADING RESULTS**

Carat Weight 1.95 CARAT  
Color Grade I  
Clarity Grade VVS 2  
Cut Grade EXCELLENT

**ADDITIONAL GRADING INFORMATION**

Polish EXCELLENT  
Symmetry EXCELLENT  
Fluorescence NONE  
Inscription(s) LG633480651



**IGI LABORATORY GROWN  
DIAMOND ID REPORT**

August 21, 2024  
IGI Report Number **LG633480651**  
**ROUND BRILLIANT**  
**7.96 - 7.98 X 4.97 MM**  
Carat Weight 1.95 CARAT  
Color Grade I  
Clarity Grade VVS 2  
Cut Grade EXCELLENT  
Polish EXCELLENT  
Symmetry EXCELLENT  
Fluorescence NONE  
Inscription(s) LG633480651



THIS DOCUMENT WAS PRODUCED WITH THE FOLLOWING SECURITY MEASURES: SPECIAL DOCUMENT PAPER, INK SCREENS, WATERMARK, BACKGROUND DESIGN, HOLOGRAM AND OTHER SECURITY FEATURES NOT LISTED AND DO EXCEED DOCUMENT SECURITY INDUSTRY GUIDELINES.

For terms & conditions and to verify this report, please visit [www.igi.org](http://www.igi.org)