



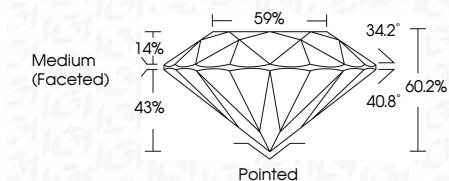
ELECTRONIC COPY

LG633483561 Report verification at igi.org



May 9, 2024 IGI Report Number LG633483561 Description LABORATORY GROWN DIAMOND Shape and Cutting Style ROUND BRILLIANT Measurements 9.76 - 9.79 X 5.89 MM

GRADING RESULTS Carat Weight 3.44 CARATS Color Grade E Clarity Grade VS 1 Cut Grade IDEAL



ADDITIONAL GRADING INFORMATION Polish EXCELLENT Symmetry EXCELLENT Fluorescence NONE Inscription(s) LG633483561 Comments: This Laboratory Grown Diamond was created by Chemical Vapor Deposition (CVD) growth process and may include post-growth treatment. Type IIa



May 9, 2024 IGI Report No LG633483561 ROUND BRILLIANT 9.76 - 9.79 X 5.89 MM 3.44 CARATS E VS 1 IDEAL 60.2% 59% Medium (Faceted) Pointed EXCELLENT EXCELLENT NONE NONE LG633483561

LABORATORY GROWN DIAMOND REPORT

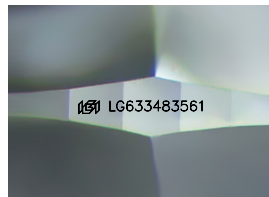
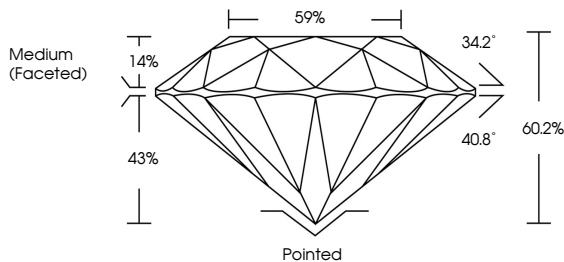
May 9, 2024 IGI Report Number LG633483561 Description LABORATORY GROWN DIAMOND Shape and Cutting Style ROUND BRILLIANT Measurements 9.76 - 9.79 X 5.89 MM

GRADING RESULTS Carat Weight 3.44 CARATS Color Grade E Clarity Grade VS 1 Cut Grade IDEAL

ADDITIONAL GRADING INFORMATION Polish EXCELLENT Symmetry EXCELLENT Fluorescence NONE Inscription(s) LG633483561

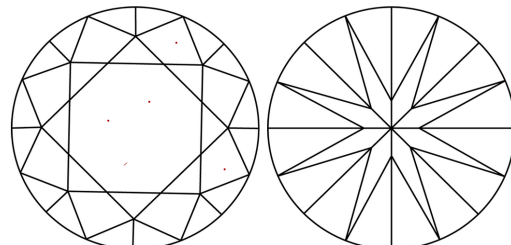
Comments: This Laboratory Grown Diamond was created by Chemical Vapor Deposition (CVD) growth process and may include post-growth treatment. Type IIa

PROPORTIONS



Sample Image Used

CLARITY CHARACTERISTICS



KEY TO SYMBOLS Red symbols indicate internal characteristics. Green symbols indicate external characteristics.

COLOR table with columns D, E, F, G, H, I, J, Faint, Very Light, Light

CLARITY table with columns IF, VVS 1-2, VS 1-2, SI 1-2, I 1-3, Internally Flawless, Very Very Slightly Included, Very Slightly Included, Slightly Included, Included

