



ELECTRONIC COPY

LABORATORY GROWN DIAMOND REPORT

LG633485715

Report verification at igi.org

LABORATORY GROWN
DIAMOND REPORT

LABORATORY GROWN DIAMOND REPORT

LABORATORY GROWN DIAMOND REPORT

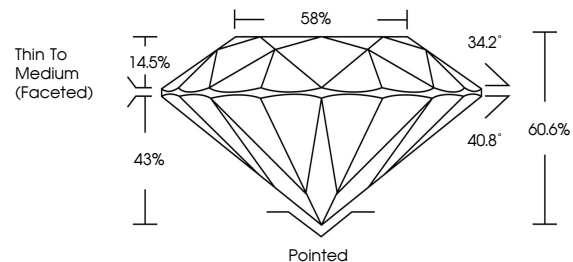
May 6, 2024
 IGI Report Number **LG633485715**
 Description **LABORATORY GROWN DIAMOND**
 Shape and Cutting Style **ROUND BRILLIANT**
 Measurements **8.79 - 8.84 X 5.34 MM**
GRADING RESULTS
 Carat Weight **2.51 CARATS**
 Color Grade **D**
 Clarity Grade **VVS 2**
 Cut Grade **IDEAL**

ADDITIONAL GRADING INFORMATION

Polish **EXCELLENT**
 Symmetry **EXCELLENT**
 Fluorescence **NONE**
 Inscription(s) **LG633485715**

Comments: HEARTS & ARROWS
 This Laboratory Grown Diamond was created by
 Chemical Vapor Deposition (CVD) growth process and
 may include post-growth treatment.
 Type IIa

PROPORTIONS



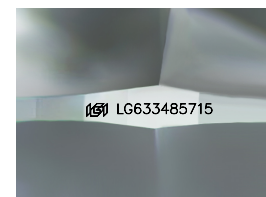
GRADING SCALES

CLARITY

IF	VVS ¹⁻²	VS ¹⁻²	SI ¹⁻²	I ¹⁻³
Internally Flawless	Very Very Slightly Included	Very Slightly Included	Slightly Included	Included

COLOR

D	E	F	G	H	I	J	Faint	Very Light	Light
---	---	---	---	---	---	---	-------	------------	-------

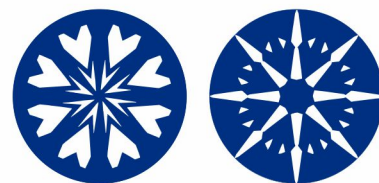


Sample Image Used

May 6, 2024
 IGI Report Number **LG633485715**
 Description **LABORATORY GROWN DIAMOND**
 Shape and Cutting Style **ROUND BRILLIANT**
 Measurements **8.79 - 8.84 X 5.34 MM**
GRADING RESULTS
 Carat Weight **2.51 CARATS**
 Color Grade **D**
 Clarity Grade **VVS 2**
 Cut Grade **IDEAL**

ADDITIONAL GRADING INFORMATION

Polish **EXCELLENT**
 Symmetry **EXCELLENT**
 Fluorescence **NONE**
 Inscription(s) **LG633485715**
 Comments: HEARTS & ARROWS
 This Laboratory Grown Diamond was created by
 Chemical Vapor Deposition (CVD) growth process and
 may include post-growth treatment.
 Type IIa



IGI

May 6, 2024	IGI Report No LG633485715	2.51 CARATS	D
ROUND BRILLIANT	8.79 - 8.84 X 5.34 MM	VVS 2	IDEAL
Carat Weight	Color Grade	Clarity Grade	Cut Grade
Depth	Table	Girdle	Thin To Medium (Faceted)
58%	34.2°	40.8°	60.6%
Pointed	EXCELLENT	EXCELLENT	NONE
Polish	Symmetry	Fluorescence	Inscriptions(s)
EXCELLENT	EXCELLENT	NONE	LG633485715

Comments: HEARTS & ARROWS
 This Laboratory Grown Diamond was created by Chemical Vapor Deposition (CVD) growth process and may include post-growth treatment.
 Type IIa