



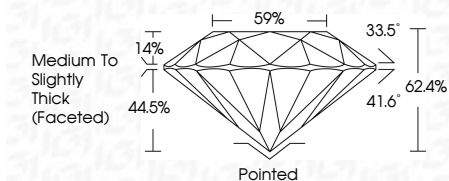
ELECTRONIC COPY

LG633486571
Report verification at igi.org



May 9, 2024
IGI Report Number: LG633486571
Description: LABORATORY GROWN DIAMOND
Shape and Cutting Style: ROUND BRILLIANT
Measurements: 9.11 - 9.18 X 5.71 MM

GRADING RESULTS
Carat Weight: 2.96 CARATS
Color Grade: H
Clarity Grade: VS 1
Cut Grade: EXCELLENT



ADDITIONAL GRADING INFORMATION
Polish: EXCELLENT
Symmetry: EXCELLENT
Fluorescence: NONE
Inscription(s): IGI LG633486571
Comments: This Laboratory Grown Diamond was created by Chemical Vapor Deposition (CVD) growth process and may include post-growth treatment. Type IIa



May 9, 2024
IGI Report No. LG633486571
ROUND BRILLIANT
9.11 - 9.18 X 5.71 MM
2.96 CARATS
Color Grade: H
Clarity Grade: VS 1
Depth: 62.4%
Table: 59%
Girdle: Medium To Slightly Thick (Faceted)
Cut: Pointed
Polish: EXCELLENT
Symmetry: EXCELLENT
Fluorescence: NONE
Inscriptions: IGI LG633486571
Comments: This Laboratory Grown Diamond was created by Chemical Vapor Deposition (CVD) growth process and may include post-growth treatment. Type IIa

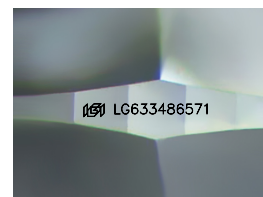
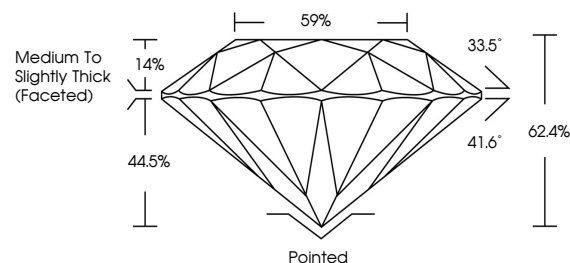
May 9, 2024
IGI Report Number: LG633486571
Description: LABORATORY GROWN DIAMOND
Shape and Cutting Style: ROUND BRILLIANT
Measurements: 9.11 - 9.18 X 5.71 MM

GRADING RESULTS
Carat Weight: 2.96 CARATS
Color Grade: H
Clarity Grade: VS 1
Cut Grade: EXCELLENT

ADDITIONAL GRADING INFORMATION
Polish: EXCELLENT
Symmetry: EXCELLENT
Fluorescence: NONE
Inscription(s): IGI LG633486571

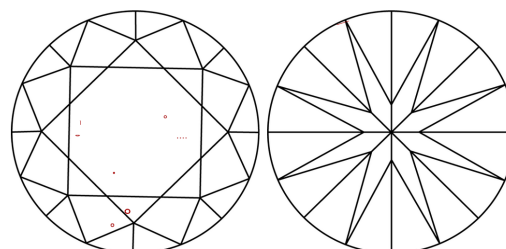
Comments: This Laboratory Grown Diamond was created by Chemical Vapor Deposition (CVD) growth process and may include post-growth treatment. Type IIa

PROPORTIONS



Sample Image Used

CLARITY CHARACTERISTICS



KEY TO SYMBOLS

Red symbols indicate internal characteristics.
Green symbols indicate external characteristics.

COLOR

D E F G H I J Faint Very Light Light

CLARITY

IF VS 1-2 VS 1-2 SI 1-2 I 1-3
Internally Flawless Very Very Slightly Included Very Slightly Included Slightly Included Included

