



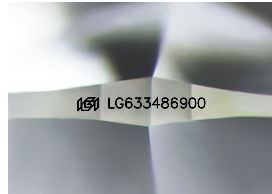
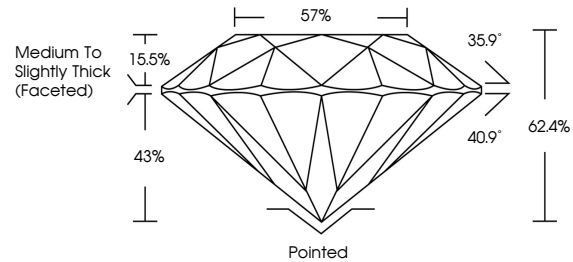
**INTERNATIONAL
GEMOLOGICAL
INSTITUTE**

ELECTRONIC COPY

LABORATORY GROWN DIAMOND REPORT

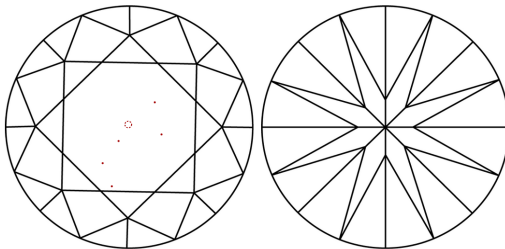
LG633486900
Report verification at igi.org

PROPORTIONS



Sample Image Used

CLARITY CHARACTERISTICS



KEY TO SYMBOLS

Red symbols indicate internal characteristics.
Green symbols indicate external characteristics.

COLOR

D E F G H I J Faint Very Light Light

CLARITY

IF	WVS ¹⁻²	VS ¹⁻²	SI ¹⁻²	I ¹⁻³
Internally Flawless	Very Very Slightly Included	Very Slightly Included	Slightly Included	Included



© IGI 2020, International Gemological Institute

FD - 10 20

www.igi.org

DIAMOND REPORT



May 6, 2024

IGI Report Number **LG633486900**

Description	LABORATORY GROWN DIAMOND
-------------	--------------------------

Shape and Cutting Style **ROUND BRILLIANT**

Measurements 9.37 - 9.42 X 5.86 MM

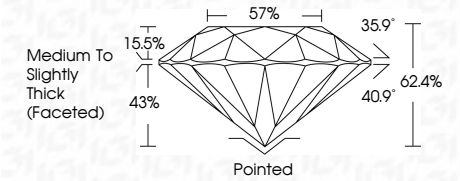
GRADING RESULTS

Carat Weight **3.22 CARATS**

Color Grade	E
-------------	---

Clarity Grade **VVS 2**

Cut Grade **IDEAL**



ADDITIONAL GRADING INFORMATION

Polish **EXCELLENT**Symmetry **EXCELLENT**Fluorescence **NONE**Inscription(s) **151 LG633486900**

Comments: This Laboratory Grown Diamond was created by Chemical Vapor Deposition (CVD) growth process and may include post-growth treatment.
Type IIa



IGI

May 6, 2024	Report No.	3.22 CARATS
IGI REPORT NO LG533489900	Color Grade	VVS 2
ROUND Brilliant	Clarity Grade	IDeAL
9.37 - 9.42 X 6.86 MM	Cut Grade	6Z-6F
Total Weight	Depth	57%
Carat Weight	Girdle	Medium to Slightly Thick (Faceted)
Culet	Poleish	Polished
Color	Symmetry	EXCELLENT
Fluorescence	Inclusions(nts)	EXCELLENT
Comments:		NONE
This Laboratory Grown Diamond was created by Chemical Vapor Deposition (CVD) growth process and may include post-growth treatment.		lgf LG533489900
Type IIC		