



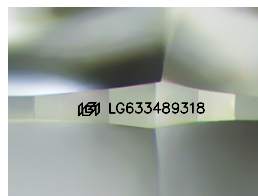
ELECTRONIC COPY

LG633489318
Report verification at igi.org



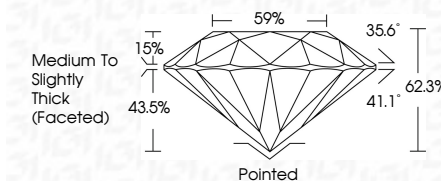
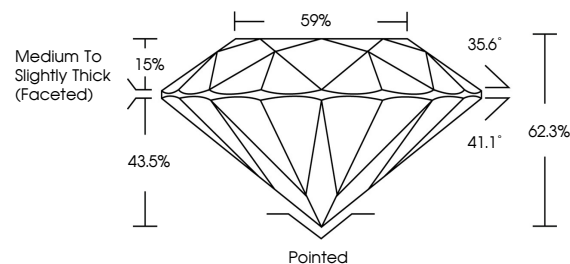
May 9, 2024
IGI Report Number LG633489318
Description LABORATORY GROWN DIAMOND
Shape and Cutting Style ROUND BRILLIANT
Measurements 7.34 - 7.39 X 4.58 MM

GRADING RESULTS
Carat Weight 1.54 CARAT
Color Grade D
Clarity Grade SI 1
Cut Grade IDEAL



Sample Image Used

PROPORTIONS



ADDITIONAL GRADING INFORMATION

Polish EXCELLENT
Symmetry EXCELLENT
Fluorescence NONE
Inscription(s) LG633489318

Comments: This Laboratory Grown Diamond was created by Chemical Vapor Deposition (CVD) growth process and may include post-growth treatment. Type IIa

COLOR

D E F G H I J Faint Very Light Light

CLARITY

IF VS 1-2 VS 1-2 SI 1-2 I 1-3
Internally Flawless Very Very Slightly Included Very Slightly Included Slightly Included Included



IGI

May 9, 2024
IGI Report No LG633489318
ROUND BRILLIANT
7.34 - 7.39 X 4.58 MM
1.54 CARAT
D
SI 1
IDEAL
62.3%
59%
Medium To Slightly Thick (Faceted)
Pointed
EXCELLENT
EXCELLENT
NONE
IGI LG633489318

Comments: This Laboratory Grown Diamond was created by Chemical Vapor Deposition (CVD) growth process and may include post-growth treatment. Type IIa