



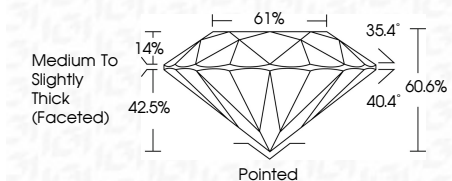
ELECTRONIC COPY

LG633489352
Report verification at igi.org



May 6, 2024
IGI Report Number: LG633489352
Description: LABORATORY GROWN DIAMOND
Shape and Cutting Style: ROUND BRILLIANT
Measurements: 8.71 - 8.75 X 5.29 MM

GRADING RESULTS
Carat Weight: 2.54 CARATS
Color Grade: D
Clarity Grade: VS 2
Cut Grade: EXCELLENT



ADDITIONAL GRADING INFORMATION
Polish: EXCELLENT
Symmetry: EXCELLENT
Fluorescence: NONE
Inscription(s): IGI LG633489352
Comments: This Laboratory Grown Diamond was created by Chemical Vapor Deposition (CVD) growth process and may include post-growth treatment. Type IIa

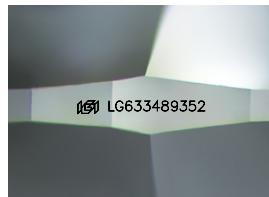
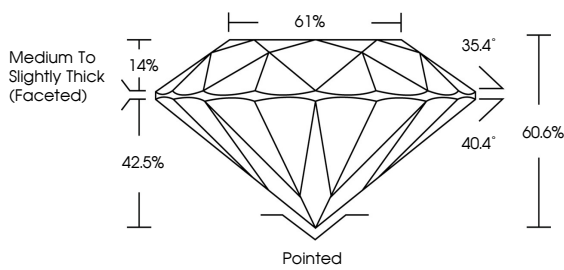


May 6, 2024
IGI Report No. LG633489352
ROUND BRILLIANT
8.71 - 8.75 X 5.29 MM
2.54 CARATS
D
EXCELLENT
VS 2
60.6%
61%
Pointed
EXCELLENT
EXCELLENT
NONE
IGI LG633489352

Comments: This Laboratory Grown Diamond was created by Chemical Vapor Deposition (CVD) growth process and may include post-growth treatment. Type IIa

May 6, 2024
IGI Report Number: LG633489352
Description: LABORATORY GROWN DIAMOND
Shape and Cutting Style: ROUND BRILLIANT
Measurements: 8.71 - 8.75 X 5.29 MM
GRADING RESULTS
Carat Weight: 2.54 CARATS
Color Grade: D
Clarity Grade: VS 2
Cut Grade: EXCELLENT
ADDITIONAL GRADING INFORMATION
Polish: EXCELLENT
Symmetry: EXCELLENT
Fluorescence: NONE
Inscription(s): IGI LG633489352

PROPORTIONS



Sample Image Used

COLOR

Table with color grades: D, E, F, G, H, I, J, Faint, Very Light, Light

CLARITY

Table with clarity grades: IF, VS 1-2, VS 1-2, SI 1-2, I 1-3, Internally Flawless, Very Very Slightly Included, Very Slightly Included, Slightly Included, Included

