



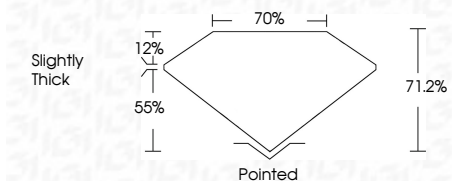
ELECTRONIC COPY

LG633490309 Report verification at igi.org



May 6, 2024 IGI Report Number LG633490309 Description LABORATORY GROWN DIAMOND Shape and Cutting Style PRINCESS CUT Measurements 6.42 X 6.25 X 4.45 MM

GRADING RESULTS Carat Weight 1.57 CARAT Color Grade G Clarity Grade VS 1



ADDITIONAL GRADING INFORMATION Polish EXCELLENT Symmetry EXCELLENT Fluorescence NONE Inscription(s) LG633490309 Comments: This Laboratory Grown Diamond was created by Chemical Vapor Deposition (CVD) growth process and may include post-growth treatment. Type IIa



May 6, 2024 IGI Report No LG633490309 PRINCESS CUT 1.57 CARAT G 6.42 X 6.25 X 4.45 MM 71.2% 70% Slightly Thick Pointed EXCELLENT EXCELLENT NONE NONE LG633490309

Comments: This Laboratory Grown Diamond was created by Chemical Vapor Deposition (CVD) growth process and may include post-growth treatment. Type IIa

LABORATORY GROWN DIAMOND REPORT

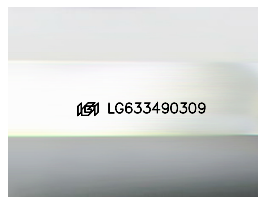
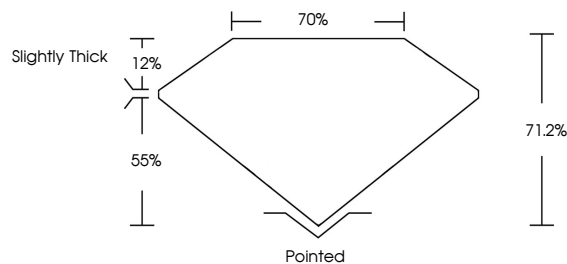
May 6, 2024 IGI Report Number LG633490309 Description LABORATORY GROWN DIAMOND Shape and Cutting Style PRINCESS CUT Measurements 6.42 X 6.25 X 4.45 MM

GRADING RESULTS Carat Weight 1.57 CARAT Color Grade G Clarity Grade VS 1

ADDITIONAL GRADING INFORMATION Polish EXCELLENT Symmetry EXCELLENT Fluorescence NONE Inscription(s) LG633490309

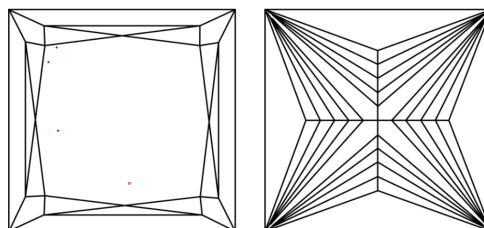
Comments: This Laboratory Grown Diamond was created by Chemical Vapor Deposition (CVD) growth process and may include post-growth treatment. Type IIa

PROPORTIONS



Sample Image Used

CLARITY CHARACTERISTICS



KEY TO SYMBOLS

Red symbols indicate internal characteristics. Green symbols indicate external characteristics.

COLOR

D E F G H I J Faint Very Light Light

CLARITY

IF VS 1-2 VS 1-2 SI 1-2 I 1-3 Internally Flawless Very Very Slightly Included Very Slightly Included Slightly Included Included

