



**INTERNATIONAL
GEMOLOGICAL
INSTITUTE**

ELECTRONIC COPY

LG633490683

LABORATORY GROWN DIAMOND REPORT

May 2, 2024
IGI Report Number **LG633490683**
Description **LABORATORY GROWN DIAMOND**
Shape and Cutting Style **EMERALD CUT**
Measurements **7.02 X 4.67 X 3.01 MM**

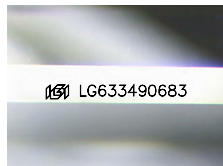
GRADING RESULTS

Carat Weight **0.96 CARAT**
Color Grade **D**
Clarity Grade **VVS 1**
Cut Grade **EXCELLENT**

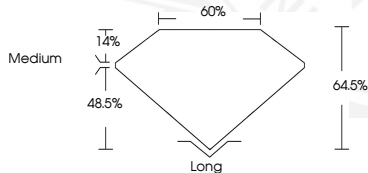
ADDITIONAL GRADING INFORMATION

Polish **EXCELLENT**
Symmetry **EXCELLENT**
Fluorescence **NONE**
Inscription(s) **IGI LG633490683**

Comments: As Grown - No indication of post-growth treatment. This Laboratory Grown Diamond was created by High Pressure High Temperature (HPHT) growth process. Type II



Sample Image Used



May 2, 2024
IGI Report Number **LG633490683**
EMERALD CUT
LABORATORY GROWN DIAMOND
7.02 X 4.67 X 3.01 MM
Carat Weight **0.96 CARAT**
Color Grade **D**
Clarity Grade **VVS 1**
Cut Grade **EXCELLENT**
Polish **EXCELLENT**
Symmetry **EXCELLENT**
Fluorescence **NONE**
Inscription(s) **IGI LG633490683**

Comments: As Grown - No indication of post-growth treatment. This Laboratory Grown Diamond was created by High Pressure High Temperature (HPHT) growth process. Type II



May 2, 2024
IGI Report Number **LG633490683**
EMERALD CUT
LABORATORY GROWN DIAMOND
7.02 X 4.67 X 3.01 MM
Carat Weight **0.96 CARAT**
Color Grade **D**
Clarity Grade **VVS 1**
Cut Grade **EXCELLENT**
Polish **EXCELLENT**
Symmetry **EXCELLENT**
Fluorescence **NONE**
Inscription(s) **IGI LG633490683**

Comments: As Grown - No indication of post-growth treatment. This Laboratory Grown Diamond was created by High Pressure High Temperature (HPHT) growth process. Type II

THIS DOCUMENT WAS PRODUCED WITH THE FOLLOWING SECURITY MEASURES: SPECIAL DOCUMENT PAPER, INK SCREENS, WATERMARK, BACKGROUND DESIGN, HOLOGRAM AND OTHER SECURITY FEATURES NOT LISTED AND DO EXCEED DOCUMENT SECURITY INDUSTRY GUIDELINES.

For terms & conditions and to verify this report, please visit www.igi.org