



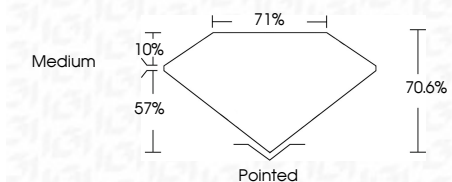
ELECTRONIC COPY

LG633491783 Report verification at igi.org



May 11, 2024 IGI Report Number LG633491783 Description LABORATORY GROWN DIAMOND Shape and Cutting Style PRINCESS CUT Measurements 6.61 X 6.50 X 4.59 MM

GRADING RESULTS Carat Weight 1.72 CARAT Color Grade E Clarity Grade VS 2



ADDITIONAL GRADING INFORMATION Polish EXCELLENT Symmetry EXCELLENT Fluorescence NONE Inscription(s) LG633491783 Comments: This Laboratory Grown Diamond was created by Chemical Vapor Deposition (CVD) growth process and may include post-growth treatment. Type IIa



May 11, 2024 IGI Report No. LG633491783 PRINCESS CUT 6.61 X 6.50 X 4.59 MM 1.72 CARAT E VS 2 70.6% 71% Medium Pointed EXCELLENT EXCELLENT NONE NONE LG633491783

Comments: This Laboratory Grown Diamond was created by Chemical Vapor Deposition (CVD) growth process and may include post-growth treatment. Type IIa

LABORATORY GROWN DIAMOND REPORT

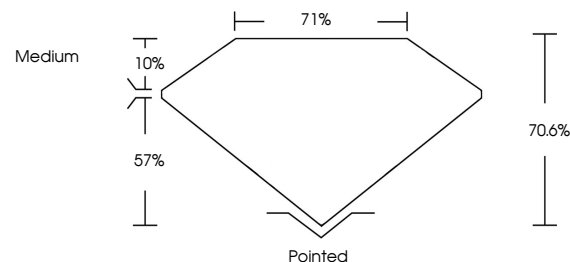
May 11, 2024 IGI Report Number LG633491783 Description LABORATORY GROWN DIAMOND Shape and Cutting Style PRINCESS CUT Measurements 6.61 X 6.50 X 4.59 MM

GRADING RESULTS Carat Weight 1.72 CARAT Color Grade E Clarity Grade VS 2

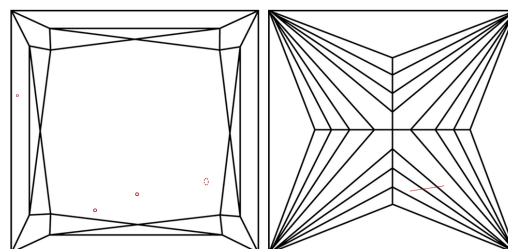
ADDITIONAL GRADING INFORMATION Polish EXCELLENT Symmetry EXCELLENT Fluorescence NONE Inscription(s) LG633491783

Comments: This Laboratory Grown Diamond was created by Chemical Vapor Deposition (CVD) growth process and may include post-growth treatment. Type IIa

PROPORTIONS

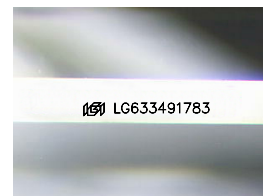


CLARITY CHARACTERISTICS



KEY TO SYMBOLS

Red symbols indicate internal characteristics. Green symbols indicate external characteristics.



Sample Image Used

COLOR

D E F G H I J Faint Very Light Light

CLARITY

IF VS 1-2 VS 1-2 SI 1-2 I 1-3 Internally Flawless Very Very Slightly Included Very Slightly Included Slightly Included Included

