



ELECTRONIC COPY

LG633494313
Report verification at igi.org



May 14, 2024
IGI Report Number LG633494313
Description LABORATORY GROWN DIAMOND
Shape and Cutting Style SQUARE CUSHION MODIFIED BRILLIANT
Measurements 8.01 X 7.84 X 5.36 MM
GRADING RESULTS
Carat Weight 3.05 CARATS
Color Grade FANCY INTENSE YELLOW
Clarity Grade VS 1

LABORATORY GROWN DIAMOND REPORT

May 14, 2024
IGI Report Number LG633494313
Description LABORATORY GROWN DIAMOND
Shape and Cutting Style SQUARE CUSHION MODIFIED BRILLIANT
Measurements 8.01 X 7.84 X 5.36 MM

GRADING RESULTS

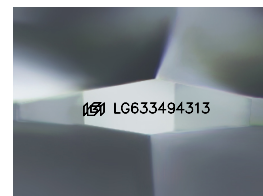
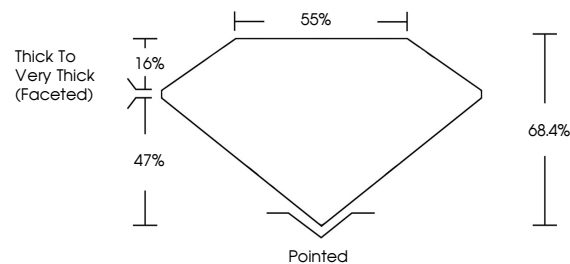
Carat Weight 3.05 CARATS
Color Grade FANCY INTENSE YELLOW
Clarity Grade VS 1

ADDITIONAL GRADING INFORMATION

Polish EXCELLENT
Symmetry VERY GOOD
Fluorescence NONE
Inscription(s) IGI LG633494313

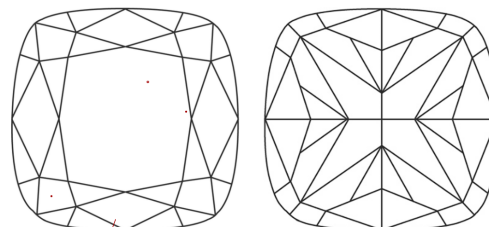
Comments: This Laboratory Grown Diamond was created by Chemical Vapor Deposition (CVD) growth process and may include post-growth treatment.

PROPORTIONS



Sample Image Used

CLARITY CHARACTERISTICS



KEY TO SYMBOLS

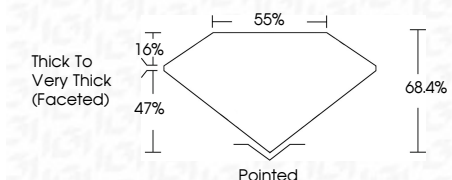
Red symbols indicate internal characteristics.
Green symbols indicate external characteristics.

COLOR

D E F G H I J Faint Very Light Light

CLARITY

Table with columns for clarity grades: IF, VS 1-2, VS 1-2, SI 1-2, I 1-3 and their corresponding descriptions: Internally Flawless, Very Very Slightly Included, Very Slightly Included, Slightly Included, Included.



ADDITIONAL GRADING INFORMATION

Polish EXCELLENT
Symmetry VERY GOOD
Fluorescence NONE
Inscription(s) IGI LG633494313
Comments: This Laboratory Grown Diamond was created by Chemical Vapor Deposition (CVD) growth process and may include post-growth treatment.



IGI



May 14, 2024
IGI Report No LG633494313
SQUARE CUSHION MODIFIED BRILLIANT
3.05 CARATS
FANCY INTENSE YELLOW
VS 1
8.01 X 7.84 X 5.36 MM
68.4%
55%
Thick to Very Thick (Faceted)
Pointed
EXCELLENT
VERY GOOD
NONE
IGI LG633494313
Comments: This Laboratory Grown Diamond was created by Chemical Vapor Deposition (CVD) growth process and may include post-growth treatment.