



ELECTRONIC COPY

LG633495435
Report verification at igi.org



May 3, 2024

IGI Report Number **LG633495435**

Description **LABORATORY GROWN DIAMOND**

Shape and Cutting Style **ROUND BRILLIANT**

Measurements **8.17 - 8.20 X 5.02 MM**

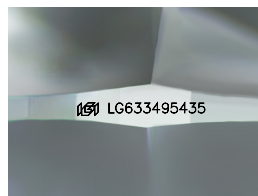
GRADING RESULTS

Carat Weight **2.06 CARATS**

Color Grade **D**

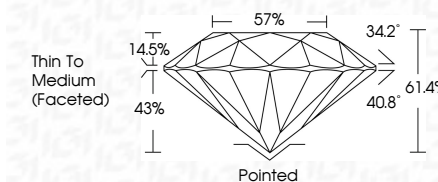
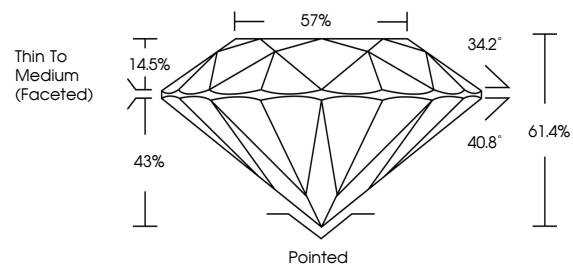
Clarity Grade **VVS 1**

Cut Grade **IDEAL**



Sample Image Used

PROPORTIONS



ADDITIONAL GRADING INFORMATION

Polish **EXCELLENT**

Symmetry **EXCELLENT**

Fluorescence **NONE**

Inscription(s) **IGI LG633495435**

Comments: HEARTS & ARROWS
This Laboratory Grown Diamond was created by Chemical Vapor Deposition (CVD) growth process and may include post-growth treatment.
Type IIa



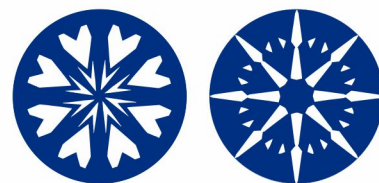
IGI

COLOR

D E F G H I J Faint Very Light Light

CLARITY

IF	VVS ¹⁻²	VS ¹⁻²	SI ¹⁻²	I ¹⁻³
Internally Flawless	Very Very Slightly Included	Very Slightly Included	Slightly Included	Included



May 3, 2024	IGI Report No LG633495435	2.06 CARATS	D
ROUND BRILLIANT	8.17 - 8.20 X 5.02 MM	VVS 1	IDEAL
Carat Weight	Color Grade	Clarity Grade	Cut Grade
2.06	D	VVS 1	IDEAL
8.17 - 8.20 X 5.02	61.4%	57%	34.2°
Thin To Medium (Faceted)	Pointed	EXCELLENT	EXCELLENT
None	NONE	EXCELLENT	EXCELLENT
IGI LG633495435	IGI LG633495435		

Comments: HEARTS & ARROWS
This Laboratory Grown Diamond was created by Chemical Vapor Deposition (CVD) growth process and may include post-growth treatment.
Type IIa