



ELECTRONIC COPY

LABORATORY GROWN DIAMOND REPORT

May 3, 2024
 IGI Report Number **LG633495474**
 Description **LABORATORY GROWN DIAMOND**
 Shape and Cutting Style **OVAL BRILLIANT**
 Measurements **8.70 X 5.82 X 3.53 MM**
GRADING RESULTS
 Carat Weight **1.10 CARAT**
 Color Grade **D**
 Clarity Grade **VVS 2**

ADDITIONAL GRADING INFORMATION

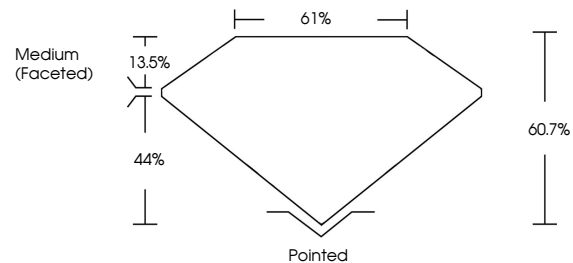
Polish **EXCELLENT**
 Symmetry **VERY GOOD**
 Fluorescence **NONE**
 Inscription(s) **LG633495474**

Comments: This Laboratory Grown Diamond was created by Chemical Vapor Deposition (CVD) growth process and may include post-growth treatment. Type IIa

LABORATORY GROWN DIAMOND REPORT

LG633495474
 Report verification at igi.org

PROPORTIONS



**LABORATORY GROWN
DIAMOND REPORT**

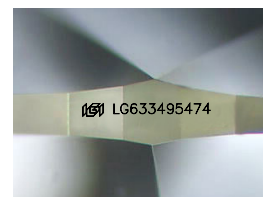
GRADING SCALES

CLARITY

IF	VVS ¹⁻²	VS ¹⁻²	SI ¹⁻²	I ¹⁻³
Internally Flawless	Very Very Slightly Included	Very Slightly Included	Slightly Included	Included

COLOR

D	E	F	G	H	I	J	Faint	Very Light	Light
---	---	---	---	---	---	---	-------	------------	-------



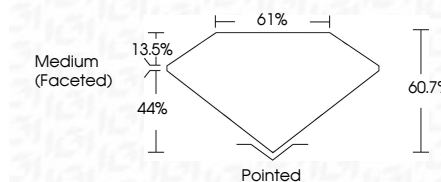
Sample Image Used

LABORATORY GROWN DIAMOND REPORT

May 3, 2024
 IGI Report Number **LG633495474**
 Description **LABORATORY GROWN DIAMOND**
 Shape and Cutting Style **OVAL BRILLIANT**
 Measurements **8.70 X 5.82 X 3.53 MM**
GRADING RESULTS
 Carat Weight **1.10 CARAT**
 Color Grade **D**
 Clarity Grade **VVS 2**

ADDITIONAL GRADING INFORMATION

Polish **EXCELLENT**
 Symmetry **VERY GOOD**
 Fluorescence **NONE**
 Inscription(s) **LG633495474**
 Comments: This Laboratory Grown Diamond was created by Chemical Vapor Deposition (CVD) growth process and may include post-growth treatment. Type IIa



IGI

May 3, 2024
 IGI Report No **LG633495474**
OVAL BRILLIANT
 8.70 X 5.82 X 3.53 MM
 Carat Weight **1.10 CARAT**
 Color Grade **D**
 Clarity Grade **VVS 2**
 Depth **60.7%**
 Table **13.5%**
 Girdle **Medium (Faceted)**
 Culet **Pointed**
 Polish **EXCELLENT**
 Symmetry **VERY GOOD**
 Fluorescence **NONE**
 Inscription(s) **LG633495474**

Comments: This Laboratory Grown Diamond was created by Chemical Vapor Deposition (CVD) growth process and may include post-growth treatment. Type IIa