



ELECTRONIC COPY

LG633496476
Report verification at igi.org



May 3, 2024

IGI Report Number **LG633496476**

Description **LABORATORY GROWN DIAMOND**

Shape and Cutting Style **ROUND BRILLIANT**

Measurements **6.56 - 6.62 X 3.90 MM**

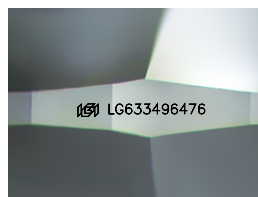
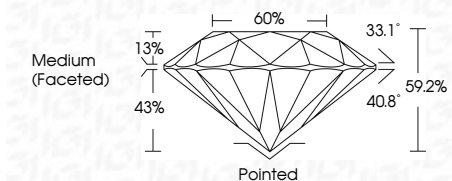
GRADING RESULTS

Carat Weight **1.02 CARAT**

Color Grade **D**

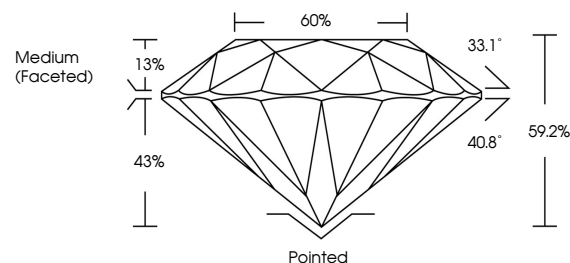
Clarity Grade **VVS 1**

Cut Grade **IDEAL**

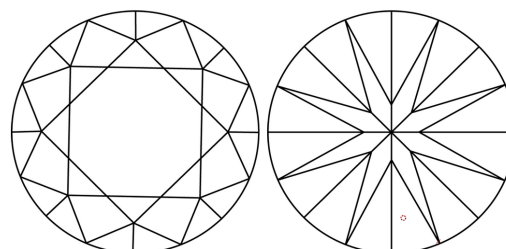


Sample Image Used

PROPORTIONS



CLARITY CHARACTERISTICS



KEY TO SYMBOLS

Red symbols indicate internal characteristics.
Green symbols indicate external characteristics.

COLOR

D E F G H I J Faint Very Light Light

CLARITY

IF	VS ¹⁻²	VS ¹⁻²	SI ¹⁻²	I ¹⁻³
Internally Flawless	Very Very Slightly Included	Very Slightly Included	Slightly Included	Included

ADDITIONAL GRADING INFORMATION

Polish **EXCELLENT**

Symmetry **EXCELLENT**

Fluorescence **NONE**

Inscription(s) **IGI LG633496476**

Comments: As Grown - No indication of post-growth treatment.

This Laboratory Grown Diamond was created by High Pressure High Temperature (HPHT) growth process.

Type II



IGI

May 3, 2024	IGI Report No LG633496476	1.02 CARAT	D
ROUND BRILLIANT	6.56 - 6.62 X 3.90 MM	VVS 1	IDEAL
Color Grade	60%	Medium (Faceted)	Pointed
Clarity Grade	59.2%	NONE	EXCELLENT
Depth	43%	IGI LG633496476	EXCELLENT
Table	13%		NONE
Girdle			EXCELLENT
Culet			EXCELLENT
Polish			EXCELLENT
Symmetry			EXCELLENT
Fluorescence			NONE
Inscriptions(s)			IGI LG633496476

Comments: As Grown - No indication of post-growth treatment.
This Laboratory Grown Diamond was created by High Pressure High Temperature (HPHT) growth process.
Type II