



ELECTRONIC COPY

LG633496607
Report verification at igi.org



May 3, 2024

IGI Report Number **LG633496607**

Description **LABORATORY GROWN DIAMOND**

Shape and Cutting Style **ROUND BRILLIANT**

Measurements **6.51 - 6.56 X 3.84 MM**

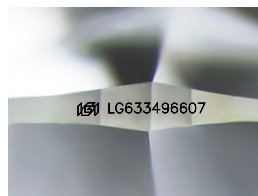
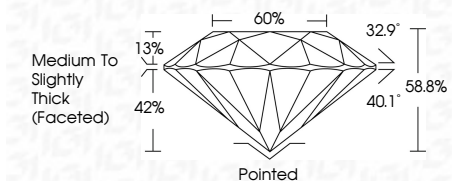
GRADING RESULTS

Carat Weight **1.02 CARAT**

Color Grade **D**

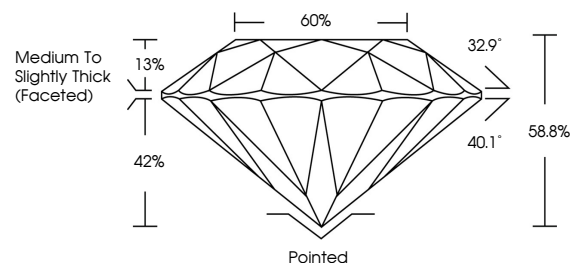
Clarity Grade **VVS 1**

Cut Grade **IDEAL**

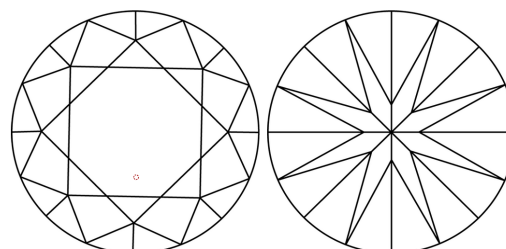


Sample Image Used

PROPORTIONS



CLARITY CHARACTERISTICS



KEY TO SYMBOLS

Red symbols indicate internal characteristics.
Green symbols indicate external characteristics.

COLOR

D E F G H I J Faint Very Light Light

CLARITY

IF	VS ¹⁻²	VS ¹⁻²	SI ¹⁻²	I ¹⁻³
Internally Flawless	Very Very Slightly Included	Very Slightly Included	Slightly Included	Included

ADDITIONAL GRADING INFORMATION

Polish **EXCELLENT**

Symmetry **EXCELLENT**

Fluorescence **NONE**

Inscription(s) **IGI LG633496607**

Comments: As Grown - No indication of post-growth treatment.

This Laboratory Grown Diamond was created by High Pressure High Temperature (HPHT) growth process. Type II



IGI

May 3, 2024	IGI Report No LG633496607	1.02 CARAT	D
ROUND BRILLIANT	6.51 - 6.56 X 3.84 MM	VVS 1	IDEAL
Color Grade	Depth 60%	Medium To Slightly Thick (Faceted)	Pointed
Clarity Grade	Table	EXCELLENT	EXCELLENT
Color	Grade	EXCELLENT	NONE
Clarity	Cut	EXCELLENT	IGI LG633496607
Color	Polish	EXCELLENT	
Clarity	Symmetry	EXCELLENT	
Color	Fluorescence	NONE	
Clarity	Inscriptions(s)	IGI LG633496607	

Comments: As Grown - No indication of post-growth treatment. This Laboratory Grown Diamond was created by High Pressure High Temperature (HPHT) growth process. Type II

