



ELECTRONIC COPY

LABORATORY GROWN DIAMOND REPORT

May 8, 2024  
IGI Report Number LG633498240  
Description LABORATORY GROWN DIAMOND  
Shape and Cutting Style CUT CORNERED RECTANGULAR MODIFIED BRILLIANT  
Measurements 8.83 X 6.22 X 4.21 MM

GRADING RESULTS

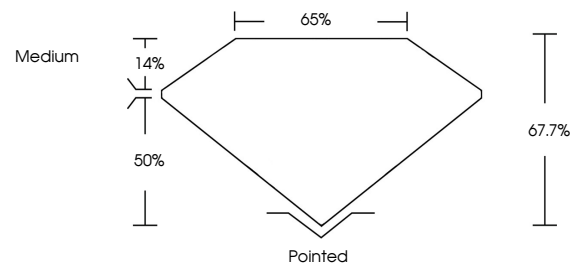
Carat Weight 2.02 CARATS  
Color Grade F  
Clarity Grade VS 1

ADDITIONAL GRADING INFORMATION

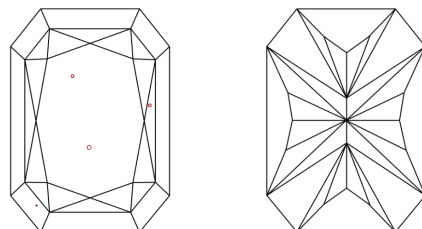
Polish EXCELLENT  
Symmetry EXCELLENT  
Fluorescence NONE  
Inscription(s) IGI LG633498240

Comments: This Laboratory Grown Diamond was created by Chemical Vapor Deposition (CVD) growth process and may include post-growth treatment. Type IIa

PROPORTIONS

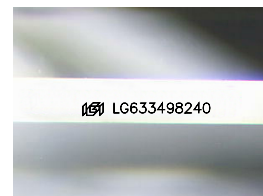


CLARITY CHARACTERISTICS



KEY TO SYMBOLS

Red symbols indicate internal characteristics.  
Green symbols indicate external characteristics.



Sample Image Used

COLOR

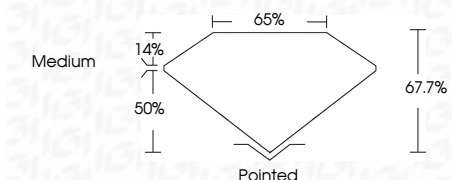
D E F G H I J Faint Very Light Light

CLARITY

IF VS 1-2 VS 1-2 SI 1-2 I 1-3  
Internally Flawless Very Very Slightly Included Very Slightly Included Slightly Included Included



May 8, 2024  
IGI Report Number LG633498240  
Description LABORATORY GROWN DIAMOND  
Shape and Cutting Style CUT CORNERED RECTANGULAR MODIFIED BRILLIANT  
Measurements 8.83 X 6.22 X 4.21 MM  
GRADING RESULTS  
Carat Weight 2.02 CARATS  
Color Grade F  
Clarity Grade VS 1



ADDITIONAL GRADING INFORMATION

Polish EXCELLENT  
Symmetry EXCELLENT  
Fluorescence NONE  
Inscription(s) IGI LG633498240  
Comments: This Laboratory Grown Diamond was created by Chemical Vapor Deposition (CVD) growth process and may include post-growth treatment. Type IIa



IGI



May 8, 2024  
IGI Report No LG633498240  
CUT CORNERED RECT. MODIFIED BRILLIANT  
8.83 X 6.22 X 4.21 MM  
2.02 CARATS  
F  
Color Grade  
VS 1  
Clarity Grade  
67.7%  
Depth  
65%  
Table  
Medium  
Grades  
Pointed  
EXCELLENT  
Culet  
EXCELLENT  
Polish  
EXCELLENT  
Symmetry  
NONE  
Fluorescence  
IGI LG633498240  
Inscription(s)

Comments: This Laboratory Grown Diamond was created by Chemical Vapor Deposition (CVD) growth process and may include post-growth treatment. Type IIa