



**INTERNATIONAL  
GEMOLOGICAL  
INSTITUTE**

**ELECTRONIC COPY**

**LABORATORY GROWN  
DIAMOND REPORT**

**LG633498728**

**IGI LABORATORY GROWN  
DIAMOND ID REPORT**

May 6, 2024

IGI Report Number **LG633498728**

**ROUND BRILLIANT**

**4.90 - 4.93 X 2.91 MM**

|                |             |
|----------------|-------------|
| Carat Weight   | 0.42 CARAT  |
| Color Grade    | D           |
| Clarity Grade  | VS 1        |
| Cut Grade      | EXCELLENT   |
| Polish         | EXCELLENT   |
| Symmetry       | EXCELLENT   |
| Fluorescence   | NONE        |
| Inscription(s) | LG633498728 |

Comments: HEARTS & ARROWS This Laboratory Grown Diamond was created by Chemical Vapor Deposition (CVD) growth process and may include post-growth treatment. Type Ila

**LABORATORY GROWN DIAMOND REPORT**

**IGI LABORATORY GROWN DIAMOND IDENTIFICATION REPORT**

May 6, 2024

IGI Report Number **LG633498728**

Description **LABORATORY GROWN DIAMOND**

Shape and Cutting Style **ROUND BRILLIANT**

Measurements **4.90 - 4.93 X 2.91 MM**

**GRADING RESULTS**

Carat Weight **0.42 CARAT**

Color Grade **D**

Clarity Grade **VS 1**

Cut Grade **EXCELLENT**

**ADDITIONAL GRADING INFORMATION**

Polish **EXCELLENT**

Symmetry **EXCELLENT**

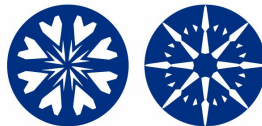
Fluorescence **NONE**

Inscription(s) **LG633498728**

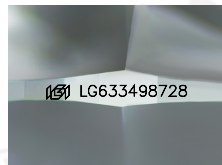
Comments: HEARTS & ARROWS

This Laboratory Grown Diamond was created by Chemical Vapor Deposition (CVD) growth process and may include post-growth treatment.

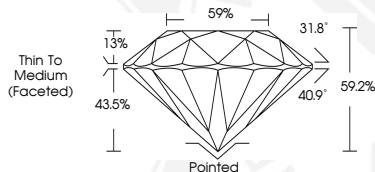
Type Ila



**HEARTS & ARROWS**



Sample Image Used



**IGI LABORATORY GROWN  
DIAMOND ID REPORT**

May 6, 2024

IGI Report Number **LG633498728**

**ROUND BRILLIANT**

**4.90 - 4.93 X 2.91 MM**

|                |             |
|----------------|-------------|
| Carat Weight   | 0.42 CARAT  |
| Color Grade    | D           |
| Clarity Grade  | VS 1        |
| Cut Grade      | EXCELLENT   |
| Polish         | EXCELLENT   |
| Symmetry       | EXCELLENT   |
| Fluorescence   | NONE        |
| Inscription(s) | LG633498728 |

Comments: HEARTS & ARROWS This Laboratory Grown Diamond was created by Chemical Vapor Deposition (CVD) growth process and may include post-growth treatment. Type Ila

THIS DOCUMENT WAS PRODUCED WITH THE FOLLOWING SECURITY MEASURES: SPECIAL DOCUMENT PAPER, INK SCREENS, WATERMARK, BACKGROUND DESIGN, HOLOGRAM AND OTHER SECURITY FEATURES NOT LISTED AND DO EXCEED DOCUMENT SECURITY INDUSTRY GUIDELINES.

For terms & conditions and to verify this report, please visit [www.igi.org](http://www.igi.org)