



**INTERNATIONAL
GEMOLOGICAL
INSTITUTE**

ELECTRONIC COPY

**LABORATORY GROWN
DIAMOND REPORT**

LG633498731

**IGI LABORATORY GROWN
DIAMOND ID REPORT**

May 6, 2024
IGI Report Number **LG633498731**
ROUND BRILLIANT
4.62 - 4.66 X 2.82 MM
Carat Weight 0.37 CARAT
Color Grade D
Clarity Grade VS 1
Cut Grade IDEAL
Polish EXCELLENT
Symmetry EXCELLENT
Fluorescence NONE
Inscription(s) LG633498731

Comments: This Laboratory Grown Diamond was created by Chemical Vapor Deposition (CVD) growth process and may include post-growth treatment. Type Ila

LABORATORY GROWN DIAMOND REPORT

IGI LABORATORY GROWN DIAMOND IDENTIFICATION REPORT

May 6, 2024
IGI Report Number **LG633498731**
Description **LABORATORY GROWN DIAMOND**
Shape and Cutting Style **ROUND BRILLIANT**
Measurements **4.62 - 4.66 X 2.82 MM**

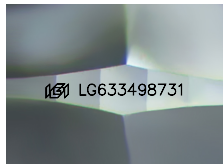
GRADING RESULTS

Carat Weight 0.37 CARAT
Color Grade D
Clarity Grade VS 1
Cut Grade IDEAL

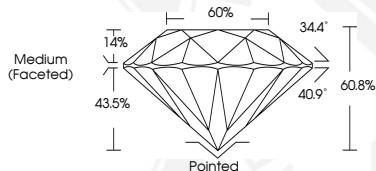
ADDITIONAL GRADING INFORMATION

Polish EXCELLENT
Symmetry EXCELLENT
Fluorescence NONE
Inscription(s) LG633498731

Comments: This Laboratory Grown Diamond was created by Chemical Vapor Deposition (CVD) growth process and may include post-growth treatment. Type Ila



Sample Image Used



**IGI LABORATORY GROWN
DIAMOND ID REPORT**

May 6, 2024
IGI Report Number **LG633498731**
ROUND BRILLIANT
4.62 - 4.66 X 2.82 MM
Carat Weight 0.37 CARAT
Color Grade D
Clarity Grade VS 1
Cut Grade IDEAL
Polish EXCELLENT
Symmetry EXCELLENT
Fluorescence NONE
Inscription(s) LG633498731

Comments: This Laboratory Grown Diamond was created by Chemical Vapor Deposition (CVD) growth process and may include post-growth treatment. Type Ila



THIS DOCUMENT WAS PRODUCED WITH THE FOLLOWING SECURITY MEASURES: SPECIAL DOCUMENT PAPER, INK SCREENS, WATERMARK, BACKGROUND DESIGN, HOLOGRAM AND OTHER SECURITY FEATURES NOT LISTED AND DO EXCEED DOCUMENT SECURITY INDUSTRY GUIDELINES.

For terms & conditions and to verify this report, please visit www.igi.org