



ELECTRONIC COPY

LG633498821

Report verification at igi.org

LABORATORY GROWN DIAMOND REPORT

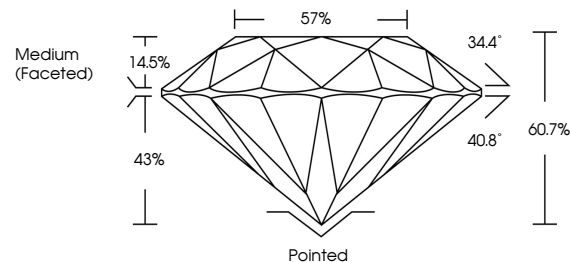
May 3, 2024
IGI Report Number LG633498821
Description LABORATORY GROWN DIAMOND
Shape and Cutting Style ROUND BRILLIANT
Measurements 8.33 - 8.37 X 5.07 MM
GRADING RESULTS
Carat Weight 2.14 CARATS
Color Grade F
Clarity Grade VVS 2
Cut Grade IDEAL

ADDITIONAL GRADING INFORMATION

Polish EXCELLENT
Symmetry EXCELLENT
Fluorescence NONE
Inscription(s) LG633498821

Comments: HEARTS & ARROWS
This Laboratory Grown Diamond was created by Chemical Vapor Deposition (CVD) growth process and may include post-growth treatment.
Type IIa

PROPORTIONS



GRADING SCALES

CLARITY

Table with 5 columns: IF, VVS 1-2, VS 1-2, SI 1-2, I 1-3. Row 1: Internally Flawless, Very Very Slightly Included, Very Slightly Included, Slightly Included, Included.

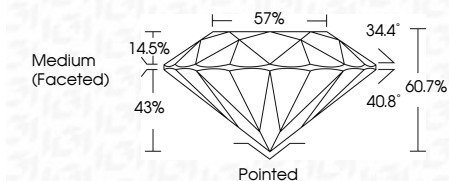
COLOR

Table with 7 columns: D, E, F, G, H, I, J, Faint, Very Light, Light.

May 3, 2024
IGI Report Number LG633498821
Description LABORATORY GROWN DIAMOND
Shape and Cutting Style ROUND BRILLIANT
Measurements 8.33 - 8.37 X 5.07 MM

GRADING RESULTS

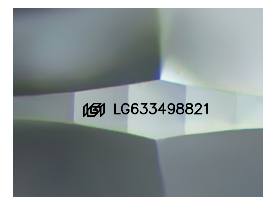
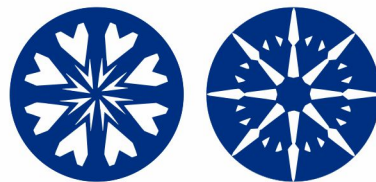
Carat Weight 2.14 CARATS
Color Grade F
Clarity Grade VVS 2
Cut Grade IDEAL



ADDITIONAL GRADING INFORMATION

Polish EXCELLENT
Symmetry EXCELLENT
Fluorescence NONE
Inscription(s) LG633498821

Comments: HEARTS & ARROWS
This Laboratory Grown Diamond was created by Chemical Vapor Deposition (CVD) growth process and may include post-growth treatment.
Type IIa



Sample Image Used



IGI

Summary table with columns: May 3, 2024, IGI Report No LG633498821, ROUND BRILLIANT, 8.33 - 8.37 X 5.07 MM, 2.14 CARATS, F, VVS 2, IDEAL, 60.7%, 57%, Medium (Faceted), Pointed, EXCELLENT, EXCELLENT, NONE, LG633498821, Comments: HEARTS & ARROWS, This Laboratory Grown Diamond was created by Chemical Vapor Deposition (CVD) growth process and may include post-growth treatment. Type IIa