



ELECTRONIC COPY

LG633499723
Report verification at igi.org



May 8, 2024

IGI Report Number LG633499723

Description LABORATORY GROWN DIAMOND

Shape and Cutting Style ROUND BRILLIANT

Measurements 9.08 - 9.15 X 5.61 MM

GRADING RESULTS

Carat Weight 2.86 CARATS

Color Grade D

Clarity Grade VS 2

Cut Grade IDEAL

LABORATORY GROWN DIAMOND REPORT

May 8, 2024

IGI Report Number LG633499723

Description LABORATORY GROWN DIAMOND

Shape and Cutting Style ROUND BRILLIANT

Measurements 9.08 - 9.15 X 5.61 MM

GRADING RESULTS

Carat Weight 2.86 CARATS

Color Grade D

Clarity Grade VS 2

Cut Grade IDEAL

ADDITIONAL GRADING INFORMATION

Polish EXCELLENT

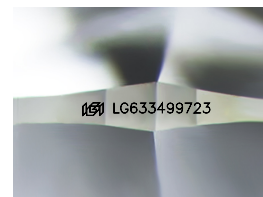
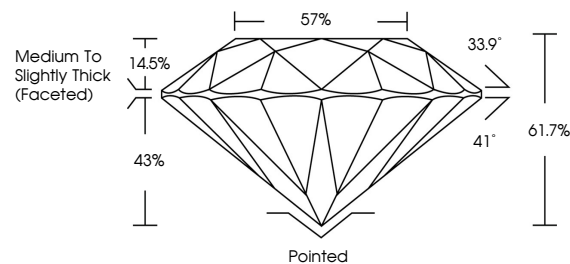
Symmetry EXCELLENT

Fluorescence NONE

Inscription(s) IGI LG633499723

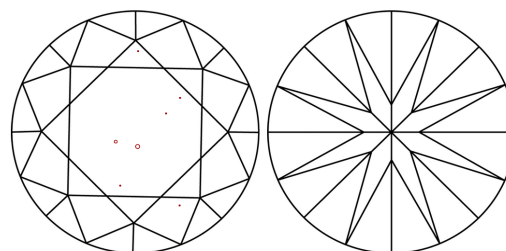
Comments: This Laboratory Grown Diamond was created by Chemical Vapor Deposition (CVD) growth process and may include post-growth treatment. Type IIa

PROPORTIONS



Sample Image Used

CLARITY CHARACTERISTICS



KEY TO SYMBOLS

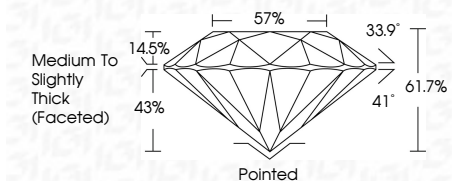
Red symbols indicate internal characteristics. Green symbols indicate external characteristics.

COLOR

D E F G H I J Faint Very Light Light

CLARITY

Table mapping clarity grades (IF, VVS, VS, SI, I) to descriptions (Internally Flawless, Very Very Slightly Included, Very Slightly Included, Slightly Included, Included).



ADDITIONAL GRADING INFORMATION

Polish EXCELLENT

Symmetry EXCELLENT

Fluorescence NONE

Inscription(s) IGI LG633499723

Comments: This Laboratory Grown Diamond was created by Chemical Vapor Deposition (CVD) growth process and may include post-growth treatment. Type IIa



IGI



Summary table of report details: Date (May 8, 2024), Report No (LG633499723), Shape (ROUND BRILLIANT), Measurements (9.08 - 9.15 X 5.61 MM), Carat Weight (2.86 CARATS), Color Grade (D), Clarity Grade (VS 2), Depth (61.7%), Table (57%), Girdle (Medium To Slightly Thick (Faceted)), Cut (Pointed), Polish (EXCELLENT), Symmetry (EXCELLENT), Fluorescence (NONE), Inscription(s) (IGI LG633499723).

Comments: This Laboratory Grown Diamond was created by Chemical Vapor Deposition (CVD) growth process and may include post-growth treatment. Type IIa