



**ELECTRONIC COPY**

**LABORATORY GROWN DIAMOND REPORT**

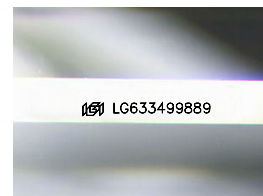
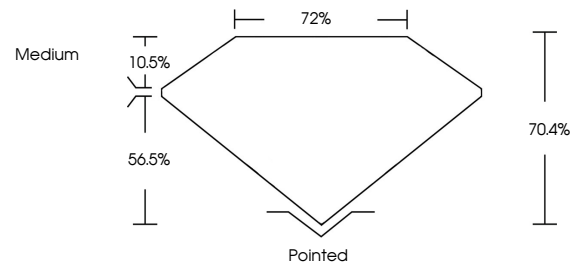
May 8, 2024  
 IGI Report Number **LG633499889**  
 Description **LABORATORY GROWN DIAMOND**  
 Shape and Cutting Style **PRINCESS CUT**  
 Measurements **6.18 X 6.14 X 4.32 MM**  
**GRADING RESULTS**  
 Carat Weight **1.46 CARAT**  
 Color Grade **G**  
 Clarity Grade **VVS 2**

**ADDITIONAL GRADING INFORMATION**

Polish **EXCELLENT**  
 Symmetry **EXCELLENT**  
 Fluorescence **NONE**  
 Inscription(s) **IGI LG633499889**

Comments: This Laboratory Grown Diamond was created by Chemical Vapor Deposition (CVD) growth process and may include post-growth treatment. Type IIa

**PROPORTIONS**



Sample Image Used

**COLOR**

D E F G H I J Faint Very Light Light

**CLARITY**

IF	VS <sup>1-2</sup>	VS <sup>1-2</sup>	SI <sup>1-2</sup>	I <sup>1-3</sup>
Internally Flawless	Very Very Slightly Included	Very Slightly Included	Slightly Included	Included

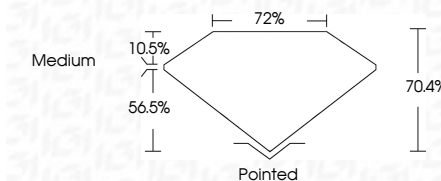


May 8, 2024  
 IGI Report Number **LG633499889**  
 Description **LABORATORY GROWN DIAMOND**  
 Shape and Cutting Style **PRINCESS CUT**  
 Measurements **6.18 X 6.14 X 4.32 MM**  
**GRADING RESULTS**  
 Carat Weight **1.46 CARAT**  
 Color Grade **G**  
 Clarity Grade **VVS 2**

**ADDITIONAL GRADING INFORMATION**

Polish **EXCELLENT**  
 Symmetry **EXCELLENT**  
 Fluorescence **NONE**  
 Inscription(s) **IGI LG633499889**

Comments: This Laboratory Grown Diamond was created by Chemical Vapor Deposition (CVD) growth process and may include post-growth treatment. Type IIa



**IGI**



May 8, 2024  
 IGI Report No. **LG633499889**  
**PRINCESS CUT**  
**6.18 X 6.14 X 4.32 MM**  
 Carat Weight **1.46 CARAT**  
 Color Grade **G**  
 Clarity Grade **VVS 2**  
 Depth **56.5%**  
 Table **10.5%**  
 Girdle **Medium**  
 Culet **Pointed**  
 Polish **EXCELLENT**  
 Symmetry **EXCELLENT**  
 Fluorescence **NONE**  
 Inscription(s) **IGI LG633499889**

Comments: This Laboratory Grown Diamond was created by Chemical Vapor Deposition (CVD) growth process and may include post-growth treatment. Type IIa