



ELECTRONIC COPY

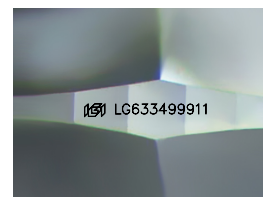
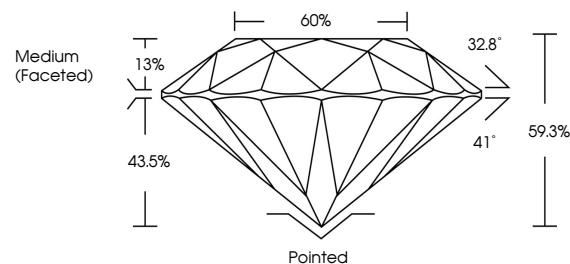
LG633499911
Report verification at igi.org



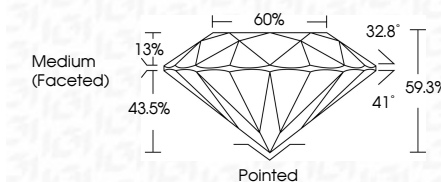
May 8, 2024
IGI Report Number LG633499911
Description LABORATORY GROWN DIAMOND
Shape and Cutting Style ROUND BRILLIANT
Measurements 7.49 - 7.52 X 4.45 MM
GRADING RESULTS
Carat Weight 1.50 CARAT
Color Grade H
Clarity Grade SI 1
Cut Grade IDEAL

May 8, 2024
IGI Report Number LG633499911
Description LABORATORY GROWN DIAMOND
Shape and Cutting Style ROUND BRILLIANT
Measurements 7.49 - 7.52 X 4.45 MM
GRADING RESULTS
Carat Weight 1.50 CARAT
Color Grade H
Clarity Grade SI 1
Cut Grade IDEAL

PROPORTIONS



Sample Image Used



ADDITIONAL GRADING INFORMATION

Polish EXCELLENT
Symmetry EXCELLENT
Fluorescence NONE
Inscription(s) IGI LG633499911

ADDITIONAL GRADING INFORMATION

Polish EXCELLENT
Symmetry EXCELLENT
Fluorescence NONE
Inscription(s) IGI LG633499911
Comments: This Laboratory Grown Diamond was created by Chemical Vapor Deposition (CVD) growth process and may include post-growth treatment. Type IIa

Comments: This Laboratory Grown Diamond was created by Chemical Vapor Deposition (CVD) growth process and may include post-growth treatment. Type IIa

COLOR

D E F G H I J Faint Very Light Light

CLARITY

IF VS 1-2 VS 1-2 SI 1-2 I 1-3
Internally Flawless Very Very Slightly Included Very Slightly Included Slightly Included Included



IGI

May 8, 2024
IGI Report No LG633499911
ROUND BRILLIANT
7.49 - 7.52 X 4.45 MM
1.50 CARAT H
Color Grade SI 1
Clarity Grade IDEAL
Depth 59.3%
Table 60%
Girdle Medium (Faceted)
Culet Pointed
Polish EXCELLENT
Symmetry EXCELLENT
Fluorescence NONE
Inscription(s) IGI LG633499911
Comments: This Laboratory Grown Diamond was created by Chemical Vapor Deposition (CVD) growth process and may include post-growth treatment. Type IIa