



ELECTRONIC COPY

LG634405663
Report verification at igi.org



May 17, 2024
IGI Report Number **LG634405663**
Description **LABORATORY GROWN DIAMOND**
Shape and Cutting Style **EMERALD CUT**
Measurements **7.86 X 5.81 X 4.03 MM**
GRADING RESULTS
Carat Weight **1.82 CARAT**
Color Grade **FANCY INTENSE BLUE**
Clarity Grade **VS 1**

LABORATORY GROWN DIAMOND REPORT

May 17, 2024
IGI Report Number **LG634405663**
Description **LABORATORY GROWN DIAMOND**
Shape and Cutting Style **EMERALD CUT**
Measurements **7.86 X 5.81 X 4.03 MM**

GRADING RESULTS

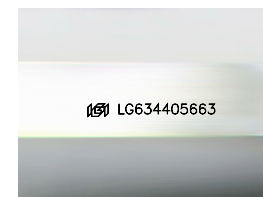
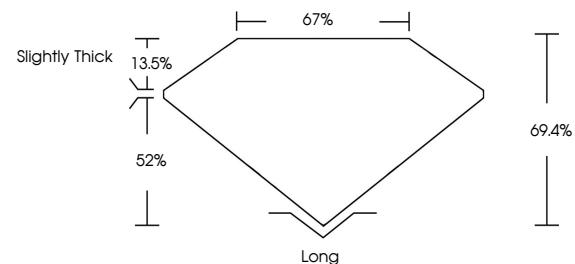
Carat Weight **1.82 CARAT**
Color Grade **FANCY INTENSE BLUE**
Clarity Grade **VS 1**

ADDITIONAL GRADING INFORMATION

Polish **EXCELLENT**
Symmetry **EXCELLENT**
Fluorescence **NONE**
Inscription(s) **IGI LG634405663**

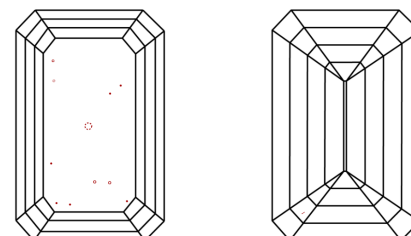
Comments: This Laboratory Grown Diamond was created by Chemical Vapor Deposition (CVD) growth process. Indications of post-growth treatment.

PROPORTIONS



Sample Image Used

CLARITY CHARACTERISTICS



KEY TO SYMBOLS

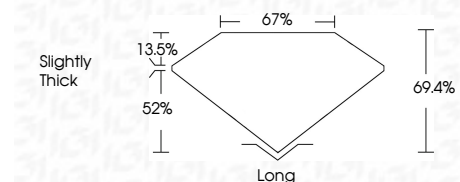
Red symbols indicate internal characteristics.
Green symbols indicate external characteristics.

COLOR

D E F G H I J Faint Very Light Light

CLARITY

IF	VS ¹⁻²	VS ¹⁻²	SI ¹⁻²	I ¹⁻³
Internally Flawless	Very Very Slightly Included	Very Slightly Included	Slightly Included	Included



ADDITIONAL GRADING INFORMATION

Polish **EXCELLENT**
Symmetry **EXCELLENT**
Fluorescence **NONE**
Inscription(s) **IGI LG634405663**
Comments: This Laboratory Grown Diamond was created by Chemical Vapor Deposition (CVD) growth process. Indications of post-growth treatment.



IGI

May 17, 2024
IGI Report No. **LG634405663**
EMERALD CUT
1.82 CARAT
Carat Weight
Color Grade **FANCY INTENSE BLUE**
Clarity Grade **VS 1**
Depth **69.4%**
Table **67%**
Girdle **Slightly Thick**
Culet **Long**
Polish **EXCELLENT**
Symmetry **EXCELLENT**
Fluorescence **NONE**
Inscription(s) **IGI LG634405663**
Comments: This Laboratory Grown Diamond was created by Chemical Vapor Deposition (CVD) growth process. Indications of post-growth treatment.