



ELECTRONIC COPY

LABORATORY GROWN DIAMOND REPORT

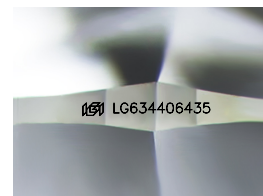
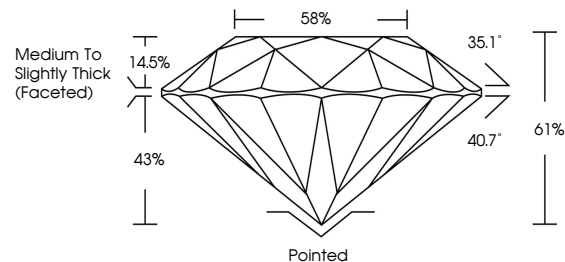
May 13, 2024  
IGI Report Number LG634406435  
Description LABORATORY GROWN DIAMOND  
Shape and Cutting Style ROUND BRILLIANT  
Measurements 6.51 - 6.55 X 3.98 MM  
**GRADING RESULTS**  
Carat Weight 1.04 CARAT  
Color Grade D  
Clarity Grade VVS 2  
Cut Grade IDEAL

ADDITIONAL GRADING INFORMATION

Polish EXCELLENT  
Symmetry EXCELLENT  
Fluorescence NONE  
Inscription(s) IGI LG634406435

Comments: HEARTS & ARROWS  
This Laboratory Grown Diamond was created by Chemical Vapor Deposition (CVD) growth process and may include post-growth treatment.  
Type IIa

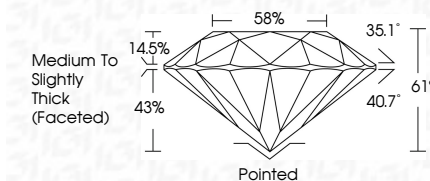
PROPORTIONS



Sample Image Used



May 13, 2024  
IGI Report Number LG634406435  
Description LABORATORY GROWN DIAMOND  
Shape and Cutting Style ROUND BRILLIANT  
Measurements 6.51 - 6.55 X 3.98 MM  
**GRADING RESULTS**  
Carat Weight 1.04 CARAT  
Color Grade D  
Clarity Grade VVS 2  
Cut Grade IDEAL



ADDITIONAL GRADING INFORMATION

Polish EXCELLENT  
Symmetry EXCELLENT  
Fluorescence NONE  
Inscription(s) IGI LG634406435  
Comments: HEARTS & ARROWS  
This Laboratory Grown Diamond was created by Chemical Vapor Deposition (CVD) growth process and may include post-growth treatment.  
Type IIa

COLOR

D E F G H I J Faint Very Light Light

CLARITY

IF VS 1-2 VS 1-2 SI 1-2 I 1-3  
Internally Flawless Very Very Slightly Included Very Slightly Included Slightly Included Included



IGI

May 13, 2024  
IGI Report No LG634406435  
ROUND BRILLIANT  
6.51 - 6.55 X 3.98 MM  
Carat Weight 1.04 CARAT  
Color Grade D  
Clarity Grade VVS 2  
Cut Grade IDEAL  
Depth 61%  
Table 58%  
Girdle Medium To Slightly Thick (Faceted)  
Culet Pointed  
Polish EXCELLENT  
Symmetry EXCELLENT  
Fluorescence NONE  
Inscriptions(s) IGI LG634406435  
Comments: HEARTS & ARROWS  
This Laboratory Grown Diamond was created by Chemical Vapor Deposition (CVD) growth process and may include post-growth treatment.  
Type IIa