



ELECTRONIC COPY

LG634407289
Report verification at igi.org

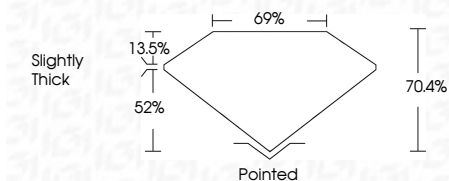


May 23, 2024
IGI Report Number **LG634407289**
Description **LABORATORY GROWN DIAMOND**
Shape and Cutting Style **CUT CORNERED
RECTANGULAR MODIFIED
BRILLIANT**

Measurements **8.54 X 6.19 X 4.36 MM**

GRADING RESULTS

Carat Weight **2.18 CARATS**
Color Grade **D**
Clarity Grade **VVS 2**



ADDITIONAL GRADING INFORMATION

Polish **EXCELLENT**
Symmetry **EXCELLENT**
Fluorescence **NONE**
Inscription(s) **IGI LG634407289**
Comments: As Grown - No indication of post-growth treatment.
This Laboratory Grown Diamond was created by Chemical Vapor Deposition (CVD) growth process. Type IIa



IGI

May 23, 2024
IGI Report No LG634407289
CUT CORNERED RECT. MODIFIED BRILLIANT
8.54 X 6.19 X 4.36 MM
2.18 CARATS
D
VVS 2
70.4%
69%
Slightly Thick
Pointed
EXCELLENT
EXCELLENT
NONE
IGI LG634407289

Comments: As Grown - No indication of post-growth treatment.
This Laboratory Grown Diamond was created by Chemical Vapor Deposition (CVD) growth process. Type IIa

LABORATORY GROWN DIAMOND REPORT

May 23, 2024
IGI Report Number **LG634407289**
Description **LABORATORY GROWN DIAMOND**
Shape and Cutting Style **CUT CORNERED RECTANGULAR
MODIFIED BRILLIANT**
Measurements **8.54 X 6.19 X 4.36 MM**

GRADING RESULTS

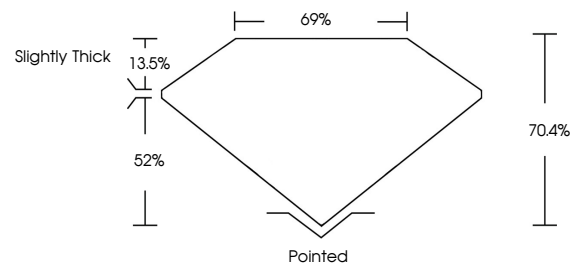
Carat Weight **2.18 CARATS**
Color Grade **D**
Clarity Grade **VVS 2**

ADDITIONAL GRADING INFORMATION

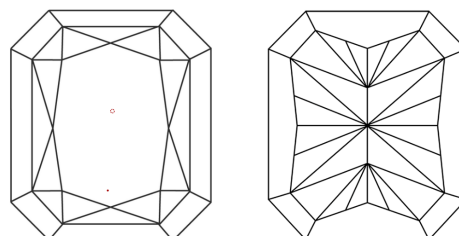
Polish **EXCELLENT**
Symmetry **EXCELLENT**
Fluorescence **NONE**
Inscription(s) **IGI LG634407289**

Comments: As Grown - No indication of post-growth treatment.
This Laboratory Grown Diamond was created by Chemical Vapor Deposition (CVD) growth process. Type IIa

PROPORTIONS

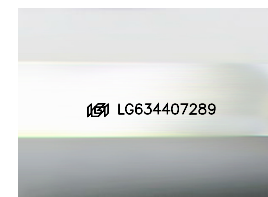


CLARITY CHARACTERISTICS



KEY TO SYMBOLS

Red symbols indicate internal characteristics.
Green symbols indicate external characteristics.



Sample Image Used

COLOR

D E F G H I J Faint Very Light Light

CLARITY

IF	VVS ¹⁻²	VS ¹⁻²	SI ¹⁻²	I ¹⁻³
Internally Flawless	Very Very Slightly Included	Very Slightly Included	Slightly Included	Included

