



ELECTRONIC COPY

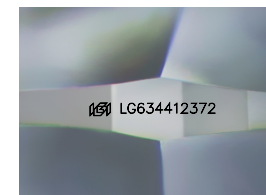
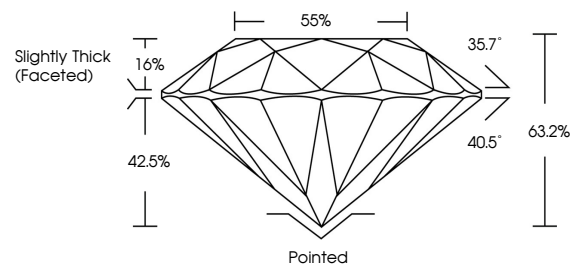
LG634412372
Report verification at igi.org



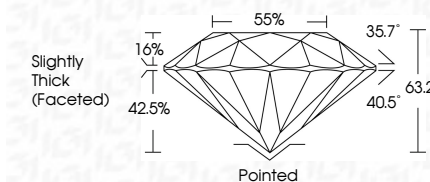
May 29, 2024
IGI Report Number **LG634412372**
Description **LABORATORY GROWN DIAMOND**
Shape and Cutting Style **ROUND BRILLIANT**
Measurements **8.65 - 8.71 X 5.49 MM**
GRADING RESULTS
Carat Weight **2.59 CARATS**
Color Grade **I**
Clarity Grade **VS 1**
Cut Grade **EXCELLENT**

May 29, 2024
IGI Report Number **LG634412372**
Description **LABORATORY GROWN DIAMOND**
Shape and Cutting Style **ROUND BRILLIANT**
Measurements **8.65 - 8.71 X 5.49 MM**
GRADING RESULTS
Carat Weight **2.59 CARATS**
Color Grade **I**
Clarity Grade **VS 1**
Cut Grade **EXCELLENT**

PROPORTIONS



Sample Image Used



ADDITIONAL GRADING INFORMATION

Polish **EXCELLENT**
Symmetry **EXCELLENT**
Fluorescence **NONE**
Inscription(s) **IGI LG634412372**

Comments: This Laboratory Grown Diamond was created by Chemical Vapor Deposition (CVD) growth process. Type IIa

ADDITIONAL GRADING INFORMATION

Polish **EXCELLENT**
Symmetry **EXCELLENT**
Fluorescence **NONE**
Inscription(s) **IGI LG634412372**
Comments: This Laboratory Grown Diamond was created by Chemical Vapor Deposition (CVD) growth process. Type IIa

COLOR

D E F G H I J Faint Very Light Light

CLARITY

IF	VS ¹⁻²	VS ¹⁻²	SI ¹⁻²	I ¹⁻³
Internally Flawless	Very Very Slightly Included	Very Slightly Included	Slightly Included	Included



IGI



May 29, 2024
IGI Report No LG634412372
ROUND BRILLIANT
8.65 - 8.71 X 5.49 MM
2.59 CARATS
Color Grade **I**
Clarity Grade **VS 1**
Depth **63.2%**
Table **1.6%**
Girdle **Slightly Thick (Faceted)**
Culet **Pointed**
Polish **EXCELLENT**
Symmetry **EXCELLENT**
Fluorescence **NONE**
Inscriptions(s) **IGI LG634412372**
Comments: This Laboratory Grown Diamond was created by Chemical Vapor Deposition (CVD) growth process. Type IIa