



ELECTRONIC COPY

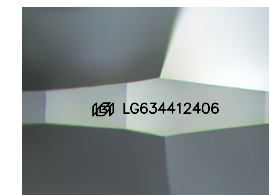
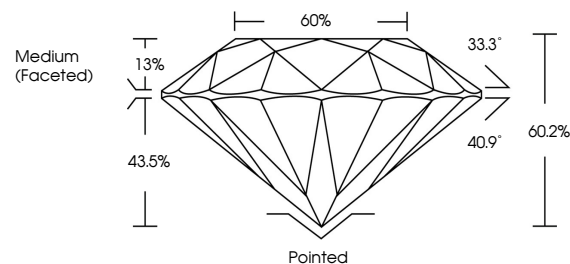
LG634412406
Report verification at igi.org



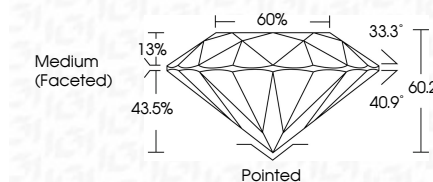
May 28, 2024
IGI Report Number **LG634412406**
Description **LABORATORY GROWN DIAMOND**
Shape and Cutting Style **ROUND BRILLIANT**
Measurements **8.15 - 8.23 X 4.93 MM**
GRADING RESULTS
Carat Weight **2.03 CARATS**
Color Grade **I**
Clarity Grade **VS 1**
Cut Grade **IDEAL**

May 28, 2024
IGI Report Number **LG634412406**
Description **LABORATORY GROWN DIAMOND**
Shape and Cutting Style **ROUND BRILLIANT**
Measurements **8.15 - 8.23 X 4.93 MM**
GRADING RESULTS
Carat Weight **2.03 CARATS**
Color Grade **I**
Clarity Grade **VS 1**
Cut Grade **IDEAL**

PROPORTIONS



Sample Image Used



ADDITIONAL GRADING INFORMATION

Polish **EXCELLENT**
Symmetry **EXCELLENT**
Fluorescence **NONE**
Inscription(s) **IGI LG634412406**

Comments: This Laboratory Grown Diamond was created by Chemical Vapor Deposition (CVD) growth process. Type IIa

ADDITIONAL GRADING INFORMATION

Polish **EXCELLENT**
Symmetry **EXCELLENT**
Fluorescence **NONE**
Inscription(s) **IGI LG634412406**
Comments: This Laboratory Grown Diamond was created by Chemical Vapor Deposition (CVD) growth process. Type IIa

COLOR

D E F G H I J Faint Very Light Light

CLARITY

IF	VS ¹⁻²	VS ¹⁻²	SI ¹⁻²	I ¹⁻³
Internally Flawless	Very Very Slightly Included	Very Slightly Included	Slightly Included	Included



IGI

May 28, 2024
IGI Report No **LG634412406**
ROUND BRILLIANT
8.15 - 8.23 X 4.93 MM
Carat Weight **2.03 CARATS**
Color Grade **I**
Clarity Grade **VS 1**
Depth **IDEAL**
Table **60.2%**
Girdle **Medium (Faceted)**
Culet **Pointed**
Polish **EXCELLENT**
Symmetry **EXCELLENT**
Fluorescence **NONE**
Inscriptions(s) **IGI LG634412406**
Comments: This Laboratory Grown Diamond was created by Chemical Vapor Deposition (CVD) growth process. Type IIa