



**INTERNATIONAL
GEMOLOGICAL
INSTITUTE**

ELECTRONIC COPY

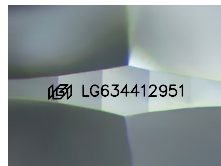
LG634412951



June 13, 2024
IGI Report Number LG634412951
ROUND BRILLIANT
LABORATORY GROWN DIAMOND
5.99 - 6.03 X 3.72 MM
Carat Weight 0.84 CARAT
Color Grade E
Clarity Grade VVS 2
Cut Grade IDEAL
Polish VERY GOOD
Symmetry EXCELLENT
Fluorescence NONE
Inscription(s) IGI LG634412951

LABORATORY GROWN DIAMOND REPORT

June 13, 2024
 IGI Report Number **LG634412951**
 Description **LABORATORY GROWN DIAMOND**
 Shape and Cutting Style **ROUND BRILLIANT**
 Measurements **5.99 - 6.03 X 3.72 MM**



Sample Image Used

GRADING RESULTS

Carat Weight 0.84 CARAT
Color Grade E
Clarity Grade VVS 2
Cut Grade IDEAL

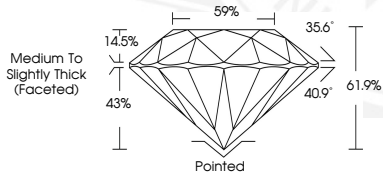
ADDITIONAL GRADING INFORMATION

Polish VERY GOOD
Symmetry EXCELLENT
Fluorescence NONE
Inscription(s) IGI LG634412951

Comments: This Laboratory Grown Diamond was created by Chemical Vapor Deposition (CVD) growth process. Type IIa



June 13, 2024
IGI Report Number LG634412951
ROUND BRILLIANT
LABORATORY GROWN DIAMOND
5.99 - 6.03 X 3.72 MM
Carat Weight 0.84 CARAT
Color Grade E
Clarity Grade VVS 2
Cut Grade IDEAL
Polish VERY GOOD
Symmetry EXCELLENT
Fluorescence NONE
Inscription(s) IGI LG634412951



Comments: This Laboratory Grown Diamond was created by Chemical Vapor Deposition (CVD) growth process. Type IIa

THIS DOCUMENT WAS PRODUCED WITH THE FOLLOWING SECURITY MEASURES: SPECIAL DOCUMENT PAPER, INK SCREENS, WATERMARK, BACKGROUND DESIGNS, HOLOGRAM AND OTHER SECURITY FEATURES NOT LISTED AND DO EXCEED DOCUMENT SECURITY INDUSTRY GUIDELINES.

For terms & conditions and to verify this report, please visit www.igi.org