



ELECTRONIC COPY

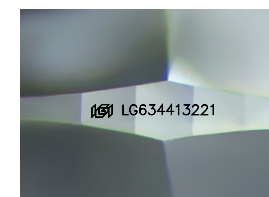
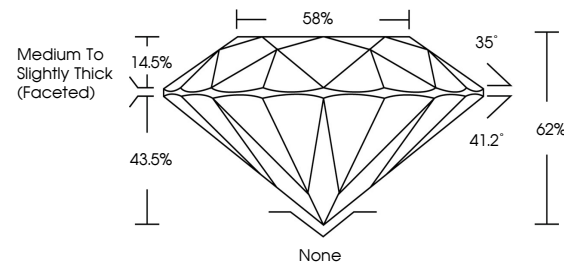
LG634413221
Report verification at igi.org



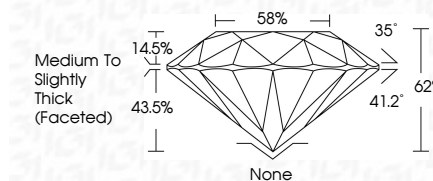
June 21, 2024
IGI Report Number **LG634413221**
Description **LABORATORY GROWN DIAMOND**
Shape and Cutting Style **ROUND BRILLIANT**
Measurements **9.50 - 9.55 X 5.90 MM**
GRADING RESULTS
Carat Weight **3.31 CARATS**
Color Grade **I**
Clarity Grade **VS 1**
Cut Grade **IDEAL**

June 21, 2024
IGI Report Number **LG634413221**
Description **LABORATORY GROWN DIAMOND**
Shape and Cutting Style **ROUND BRILLIANT**
Measurements **9.50 - 9.55 X 5.90 MM**
GRADING RESULTS
Carat Weight **3.31 CARATS**
Color Grade **I**
Clarity Grade **VS 1**
Cut Grade **IDEAL**

PROPORTIONS



Sample Image Used



ADDITIONAL GRADING INFORMATION

Polish **EXCELLENT**
Symmetry **VERY GOOD**
Fluorescence **NONE**
Inscription(s) **IGI LG634413221**

Comments: This Laboratory Grown Diamond was created by Chemical Vapor Deposition (CVD) growth process.
Type IIa

ADDITIONAL GRADING INFORMATION

Polish **EXCELLENT**
Symmetry **VERY GOOD**
Fluorescence **NONE**
Inscription(s) **IGI LG634413221**
Comments: This Laboratory Grown Diamond was created by Chemical Vapor Deposition (CVD) growth process.
Type IIa

COLOR

D E F G H I J Faint Very Light Light

CLARITY

IF	VS ¹⁻²	VS ¹⁻²	SI ¹⁻²	I ¹⁻³
Internally Flawless	Very Very Slightly Included	Very Slightly Included	Slightly Included	Included



IGI

June 21, 2024
IGI Report No LG634413221
ROUND BRILLIANT
9.50 - 9.55 X 5.90 MM
3.31 CARATS
Color Grade **I**
Clarity Grade **VS 1**
Depth **62%**
Table **14.5%**
Girdle **Medium To Slightly Thick (Faceted)**
Culet **None**
Polish **EXCELLENT**
Symmetry **VERY GOOD**
Fluorescence **NONE**
Inscriptions(s) **IGI LG634413221**
Comments: This Laboratory Grown Diamond was created by Chemical Vapor Deposition (CVD) growth process.
Type IIa