



ELECTRONIC COPY

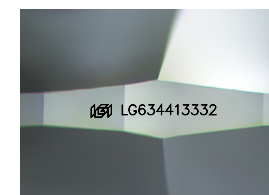
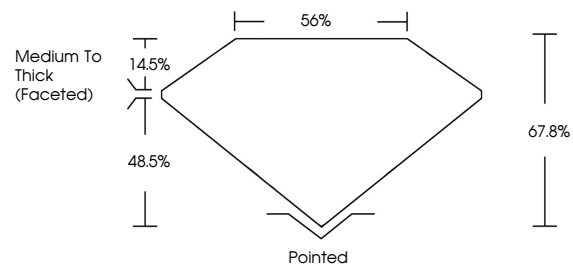
LG634413332
Report verification at igi.org



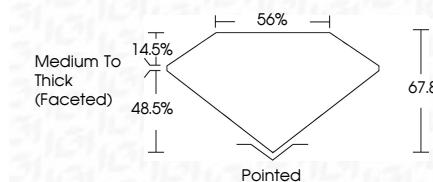
July 4, 2024
IGI Report Number **LG634413332**
Description **LABORATORY GROWN DIAMOND**
Shape and Cutting Style **CUSHION MODIFIED BRILLIANT**
Measurements **7.57 X 5.21 X 3.53 MM**
GRADING RESULTS
Carat Weight **1.14 CARAT**
Color Grade **F**
Clarity Grade **VS 1**

July 4, 2024
IGI Report Number **LG634413332**
Description **LABORATORY GROWN DIAMOND**
Shape and Cutting Style **CUSHION MODIFIED BRILLIANT**
Measurements **7.57 X 5.21 X 3.53 MM**
GRADING RESULTS
Carat Weight **1.14 CARAT**
Color Grade **F**
Clarity Grade **VS 1**

PROPORTIONS



Sample Image Used



ADDITIONAL GRADING INFORMATION

Polish **EXCELLENT**
Symmetry **EXCELLENT**
Fluorescence **NONE**
Inscription(s) **IGI LG634413332**

Comments: This Laboratory Grown Diamond was created by Chemical Vapor Deposition (CVD) growth process.
Type IIa

ADDITIONAL GRADING INFORMATION

Polish **EXCELLENT**
Symmetry **EXCELLENT**
Fluorescence **NONE**
Inscription(s) **IGI LG634413332**
Comments: This Laboratory Grown Diamond was created by Chemical Vapor Deposition (CVD) growth process.
Type IIa

COLOR

D E F G H I J Faint Very Light Light

CLARITY

IF	VS ¹⁻²	VS ¹⁻²	SI ¹⁻²	I ¹⁻³
Internally Flawless	Very Very Slightly Included	Very Slightly Included	Slightly Included	Included



IGI

July 4, 2024
IGI Report No **LG634413332**
CUSHION MODIFIED BRILLIANT
7.57 X 5.21 X 3.53 MM
1.14 CARAT
F
VS 1
67.8%
56%
Medium To Thick (Faceted)
Pointed
EXCELLENT
EXCELLENT
NONE
IGI LG634413332

Comments: This Laboratory Grown Diamond was created by Chemical Vapor Deposition (CVD) growth process.
Type IIa