



**INTERNATIONAL  
GEMOLOGICAL  
INSTITUTE**

**ELECTRONIC COPY**

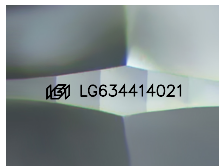
**LG634414021**



**June 26, 2024**  
**IGI Report Number LG634414021**  
**ROUND BRILLIANT**  
**LABORATORY GROWN DIAMOND**  
**5.71 - 5.75 X 3.59 MM**  
 Carat Weight **0.73 CARAT**  
 Color Grade **D**  
 Clarity Grade **VVS 2**  
 Cut Grade **EXCELLENT**  
 Polish **EXCELLENT**  
 Symmetry **EXCELLENT**  
 Fluorescence **NONE**  
 Inscription(s) **IGI LG634414021**

**LABORATORY GROWN DIAMOND REPORT**

June 26, 2024  
 IGI Report Number **LG634414021**  
 Description **LABORATORY GROWN DIAMOND**  
 Shape and Cutting Style **ROUND BRILLIANT**  
 Measurements **5.71 - 5.75 X 3.59 MM**



Sample Image Used

Comments: As Grown - No indication of post-growth treatment. This Laboratory Grown Diamond was created by High Pressure High Temperature (HPHT) growth process. Type II

**GRADING RESULTS**

Carat Weight **0.73 CARAT**  
 Color Grade **D**  
 Clarity Grade **VVS 2**  
 Cut Grade **EXCELLENT**

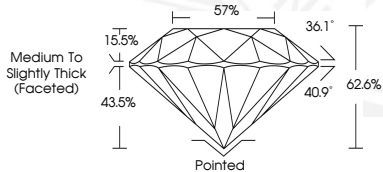
**ADDITIONAL GRADING INFORMATION**

Polish **EXCELLENT**  
 Symmetry **EXCELLENT**  
 Fluorescence **NONE**  
 Inscription(s) **IGI LG634414021**

Comments: As Grown - No indication of post-growth treatment. This Laboratory Grown Diamond was created by High Pressure High Temperature (HPHT) growth process. Type II



**June 26, 2024**  
**IGI Report Number LG634414021**  
**ROUND BRILLIANT**  
**LABORATORY GROWN DIAMOND**  
**5.71 - 5.75 X 3.59 MM**  
 Carat Weight **0.73 CARAT**  
 Color Grade **D**  
 Clarity Grade **VVS 2**  
 Cut Grade **EXCELLENT**  
 Polish **EXCELLENT**  
 Symmetry **EXCELLENT**  
 Fluorescence **NONE**  
 Inscription(s) **IGI LG634414021**



THIS DOCUMENT WAS PRODUCED WITH THE FOLLOWING SECURITY MEASURES: SPECIAL DOCUMENT PAPER, INK SCREENS, WATERMARK, BACKGROUND DESIGNS, HOLOGRAM AND OTHER SECURITY FEATURES NOT LISTED AND DO EXCEED DOCUMENT SECURITY INDUSTRY GUIDELINES.

For terms & conditions and to verify this report, please visit [www.igi.org](http://www.igi.org)