



**ELECTRONIC COPY**

LG634417467  
Report verification at igi.org

**LABORATORY GROWN DIAMOND REPORT**

May 16, 2024  
IGI Report Number **LG634417467**  
Description **LABORATORY GROWN DIAMOND**  
Shape and Cutting Style **CUT CORNERED SQUARE  
MODIFIED BRILLIANT**  
Measurements **7.67 X 7.60 X 4.68 MM**

**GRADING RESULTS**

Carat Weight **2.55 CARATS**  
Color Grade **E**  
Clarity Grade **VVS 2**

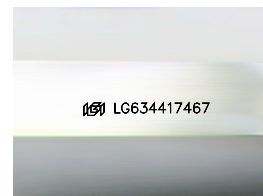
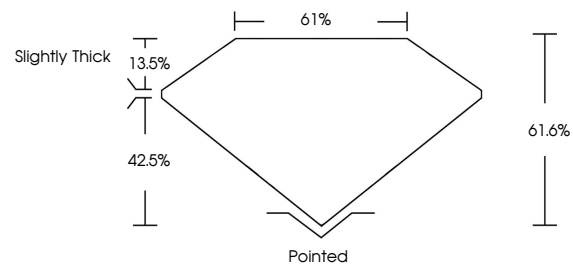
**ADDITIONAL GRADING INFORMATION**

Polish **EXCELLENT**  
Symmetry **EXCELLENT**  
Fluorescence **NONE**

Inscription(s) **IGI LG634417467**

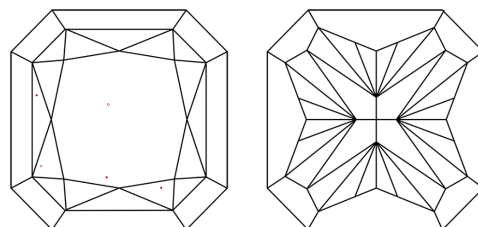
Comments: This Laboratory Grown Diamond was created by Chemical Vapor Deposition (CVD) growth process and may include post-growth treatment. Type IIa

**PROPORTIONS**



Sample Image Used

**CLARITY CHARACTERISTICS**



**KEY TO SYMBOLS**

Red symbols indicate internal characteristics.  
Green symbols indicate external characteristics.

**COLOR**

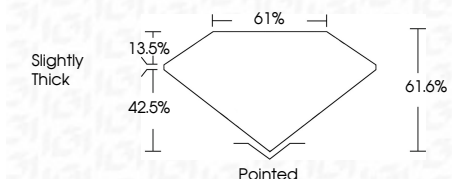
D E F G H I J Faint Very Light Light

**CLARITY**

IF	VS <sup>1-2</sup>	VS <sup>1-2</sup>	SI <sup>1-2</sup>	I <sup>1-3</sup>
Internally Flawless	Very Very Slightly Included	Very Slightly Included	Slightly Included	Included



May 16, 2024  
IGI Report Number **LG634417467**  
Description **LABORATORY GROWN DIAMOND**  
Shape and Cutting Style **CUT CORNERED SQUARE  
MODIFIED BRILLIANT**  
Measurements **7.67 X 7.60 X 4.68 MM**  
**GRADING RESULTS**  
Carat Weight **2.55 CARATS**  
Color Grade **E**  
Clarity Grade **VVS 2**



**ADDITIONAL GRADING INFORMATION**

Polish **EXCELLENT**  
Symmetry **EXCELLENT**  
Fluorescence **NONE**  
Inscription(s) **IGI LG634417467**

Comments: This Laboratory Grown Diamond was created by Chemical Vapor Deposition (CVD) growth process and may include post-growth treatment. Type IIa



**IGI**



May 16, 2024  
IGI Report No LG634417467  
**CUT CORNERED SQUARE MODIFIED BRILLIANT**  
7.67 X 7.60 X 4.68 MM  
2.55 CARATS  
E  
VVS 2  
61.6%  
61%  
Slightly Thick  
Pointed  
EXCELLENT  
EXCELLENT  
NONE  
IGI LG634417467

Comments: This Laboratory Grown Diamond was created by Chemical Vapor Deposition (CVD) growth process and may include post-growth treatment. Type IIa