

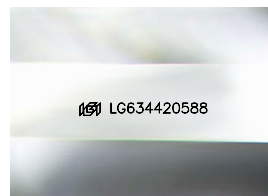
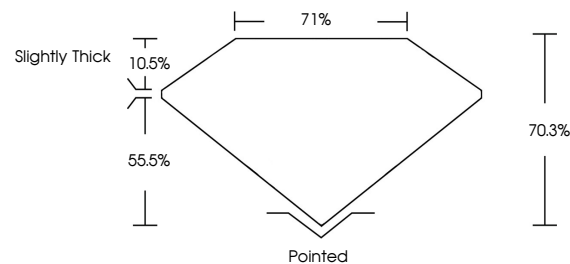


ELECTRONIC COPY

LABORATORY GROWN DIAMOND REPORT

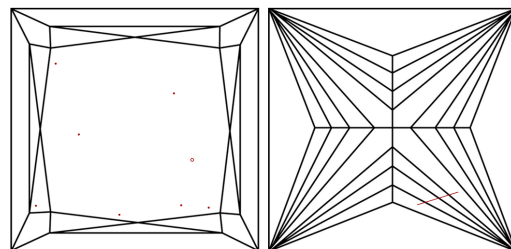
LG634420588
Report verification at igi.org

PROPORTIONS



Sample Image Used

CLARITY CHARACTERISTICS



KEY TO SYMBOLS

Red symbols indicate internal characteristics.
Green symbols indicate external characteristics.

COLOR

D E F G H I J Faint Very Light Light

CLARITY

IF	VVS ¹⁻²	VS ¹⁻²	SI ¹⁻²	I ¹⁻³
Internally Flawless	Very Very Slightly Included	Very Slightly Included	Slightly Included	Included



© IGI 2020, International Gemological Institute

FD - 10 20

www.igi.org

DIAMOND REPORT



May 18, 2024

IGI Report Number **LG634420588**Description **LABORATORY GROWN DIAMOND**Shape and Cutting Style **PRINCESS CUT**

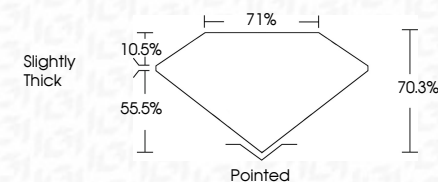
Measurements **6.62 X 6.47 X 4.55 MM**

GRADING RESULTS

Carat Weight **1.73 CARAT**

Color Grade	E
-------------	---

Clarity Grade SI 1



ADDITIONAL GRADING INFORMATION

Polish **EXCELLENT**Symmetry **EXCELLENT**Fluorescence **NONE**Inscription(s) LG634420588

Comments: This Laboratory Grown Diamond was created by Chemical Vapor Deposition (CVD) growth process and may include post-growth treatment.
Type IIa



May 18, 2024
GI Report No LG634/20588
PRINCESS CUT

6.62 X 6.47 X 4.55 MM	1.78 CARAT
Color Weight	E
Color Grade	S1
Clarity Grade	70.9%
Depth	71%
Table	Slightly Thick
Grades	
Quiet	Pointed
Polish	EXCELLENT
Symmetry	EXCELLENT
Fluorescence	NONE
Measurements (s)	See Listing for more

Comments:
This Laboratory Grown Diamond was created by Chemical Vapor Deposition (CVD) growth process and may include post-growth treatment.
Type IIa