



ELECTRONIC COPY

LABORATORY GROWN DIAMOND REPORT

May 21, 2024
IGI Report Number **LG634421043**
Description **LABORATORY GROWN DIAMOND**
Shape and Cutting Style **CUT CORNERED RECTANGULAR MODIFIED BRILLIANT**
Measurements **9.80 X 7.25 X 4.77 MM**

GRADING RESULTS

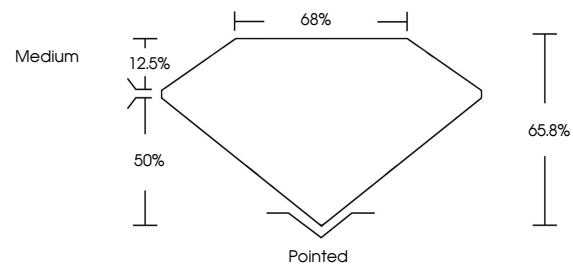
Carat Weight **2.91 CARATS**
Color Grade **H**
Clarity Grade **VVS 2**

ADDITIONAL GRADING INFORMATION

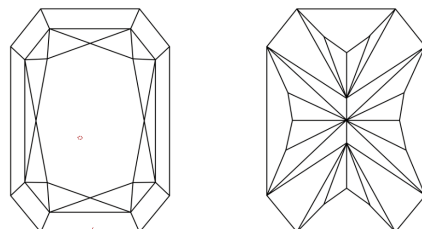
Polish **EXCELLENT**
Symmetry **EXCELLENT**
Fluorescence **NONE**
Inscription(s) **IGI LG634421043**

Comments: This Laboratory Grown Diamond was created by Chemical Vapor Deposition (CVD) growth process and may include post-growth treatment. Type IIa

PROPORTIONS

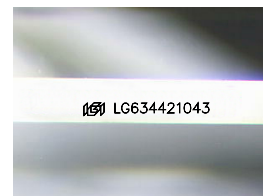


CLARITY CHARACTERISTICS



KEY TO SYMBOLS

Red symbols indicate internal characteristics.
Green symbols indicate external characteristics.



Sample Image Used

COLOR

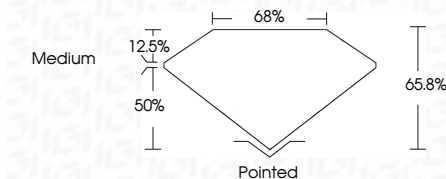
D E F G H I J Faint Very Light Light

CLARITY

IF	VS ¹⁻²	VS ¹⁻²	SI ¹⁻²	I ¹⁻³
Internally Flawless	Very Very Slightly Included	Very Slightly Included	Slightly Included	Included



May 21, 2024
IGI Report Number **LG634421043**
Description **LABORATORY GROWN DIAMOND**
Shape and Cutting Style **CUT CORNERED RECTANGULAR MODIFIED BRILLIANT**
Measurements **9.80 X 7.25 X 4.77 MM**
GRADING RESULTS
Carat Weight **2.91 CARATS**
Color Grade **H**
Clarity Grade **VVS 2**



ADDITIONAL GRADING INFORMATION

Polish **EXCELLENT**
Symmetry **EXCELLENT**
Fluorescence **NONE**
Inscription(s) **IGI LG634421043**
Comments: This Laboratory Grown Diamond was created by Chemical Vapor Deposition (CVD) growth process and may include post-growth treatment. Type IIa



IGI

May 21, 2024
IGI Report No. LG634421043
CUT CORNERED RECT. MODIFIED BRILLIANT
9.80 X 7.25 X 4.77 MM
2.91 CARATS
H
VVS 2
65.8%
65%
Medium
Pointed
EXCELLENT
EXCELLENT
NONE
IGI LG634421043

Comments: This Laboratory Grown Diamond was created by Chemical Vapor Deposition (CVD) growth process and may include post-growth treatment. Type IIa